



**LOWELL**  
CORPORATION

MAKING TOUGH JOBS EASIER SINCE 1869

## Contents

<b>Page</b>	<b>Products</b>
4	Water and Sewer Applications
5	High Line Utility Applications
6	OEM Applications
7	Plant Maintenance Applications
8	Lineman's Socket Wrenches
9	Triple Square Impact Socket
10	Heavy Duty Socket Wrenches
10	Hi-Vis Hi-Lite
11	Double Shot Dedicated Socket Wrenches
11	Heavy Duty Hydrant Wrenches
11	Quick Release Reversible Wrenches
12	Socket Sets
14	Crank Handles
15	Impakdriver
15	Double Handle Wrenches
16	T-Torker® Series Torque Wrenches
17	Valve Wheel Wrenches
17	Strap Wrenches
18	Ratchet Arms
20	Ratchet Clutches
22	Roller Clutches
24	Observation Windows
25	Custom Ratchets
25	Repair Parts
26	New Products
28	Warranty

**IF YOUR SON OR DAUGHTER HAD TO WORK ON A TRANSMISSION LINE 40 FEET IN THE AIR, IN THE MIDDLE OF A BLIZZARD, WITH THE TEMPERATURE TEN BELOW ZERO, WOULDN'T YOU WANT THE BEST TOOLS IN THEIR HANDS?**

Of course you would. And that's the way we feel about our customers.

Since 1869, we've made a variety of hand tools, most based on our reliable ratchet technology, that have made the job easier for workers in a number of industries: water, gas, and electric utilities, construction, plant maintenance. We've made tools to maintain machinery and we've made tools to make machinery perform better and more reliably.

And always—always—we've kept worker comfort and safety in mind. American workers are one of our greatest natural resources and we're proud to be able to help and protect them with the very best tools we can make.

We've been making tough jobs easier since 1869.

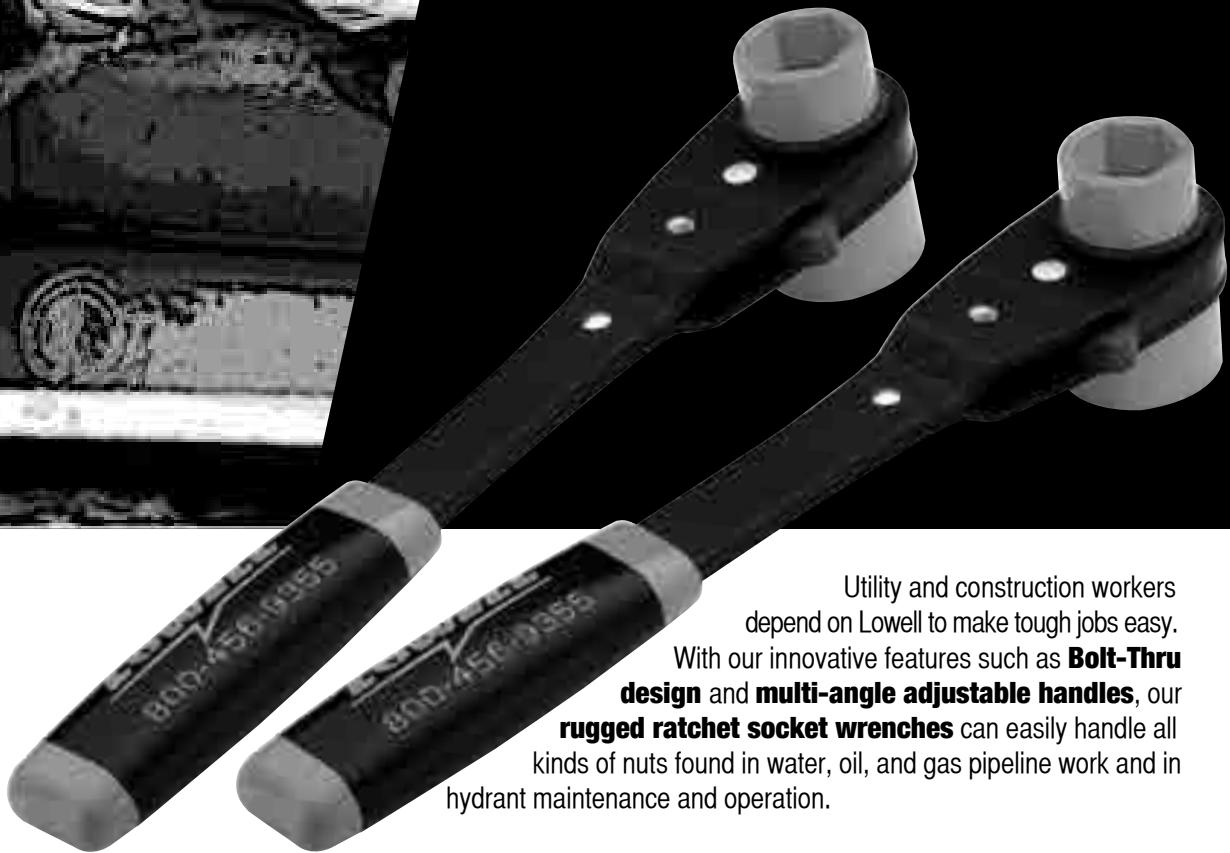


# Applications

## Water Utility and Construction



**A muddy ditch  
is a good place to  
take it easy.**



Utility and construction workers depend on Lowell to make tough jobs easy. With our innovative features such as **Bolt-Thru design** and **multi-angle adjustable handles**, our **rugged ratchet socket wrenches** can easily handle all kinds of nuts found in water, oil, and gas pipeline work and in hydrant maintenance and operation.



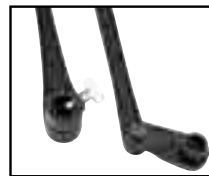
Double Shot  
Socket Wrenches  
pages 11, 13



Valve Key  
Socket Wrench Set  
page 12



Extended Reach  
Socket Wrench Set  
page 13



Hydrant Wrenches  
page 11



Strap Wrenches  
page 17



Valve Wheel  
Wrenches  
page 17



Torque Wrenches  
pages 12, 16

# Applications

## High Line Utility



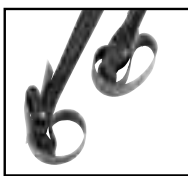
**40 feet  
up in the air is  
a good place to  
take it easy.**



High line utility workers depend on Lowell tools to make the tough jobs easy. With innovative features like **Bolt-Thru design**, our **rugged square and hex ratchet socket wrenches** can easily handle all kinds of nuts found in electrical transmission and distribution applications. All made in USA.



Lineman's Wrenches  
page 8, 9



Strap Wrenches  
page 17



Torque Wrenches  
pages 12, 16



Socket Wrenches  
pages 10, 11



Socket Wrench Sets  
pages 12, 13



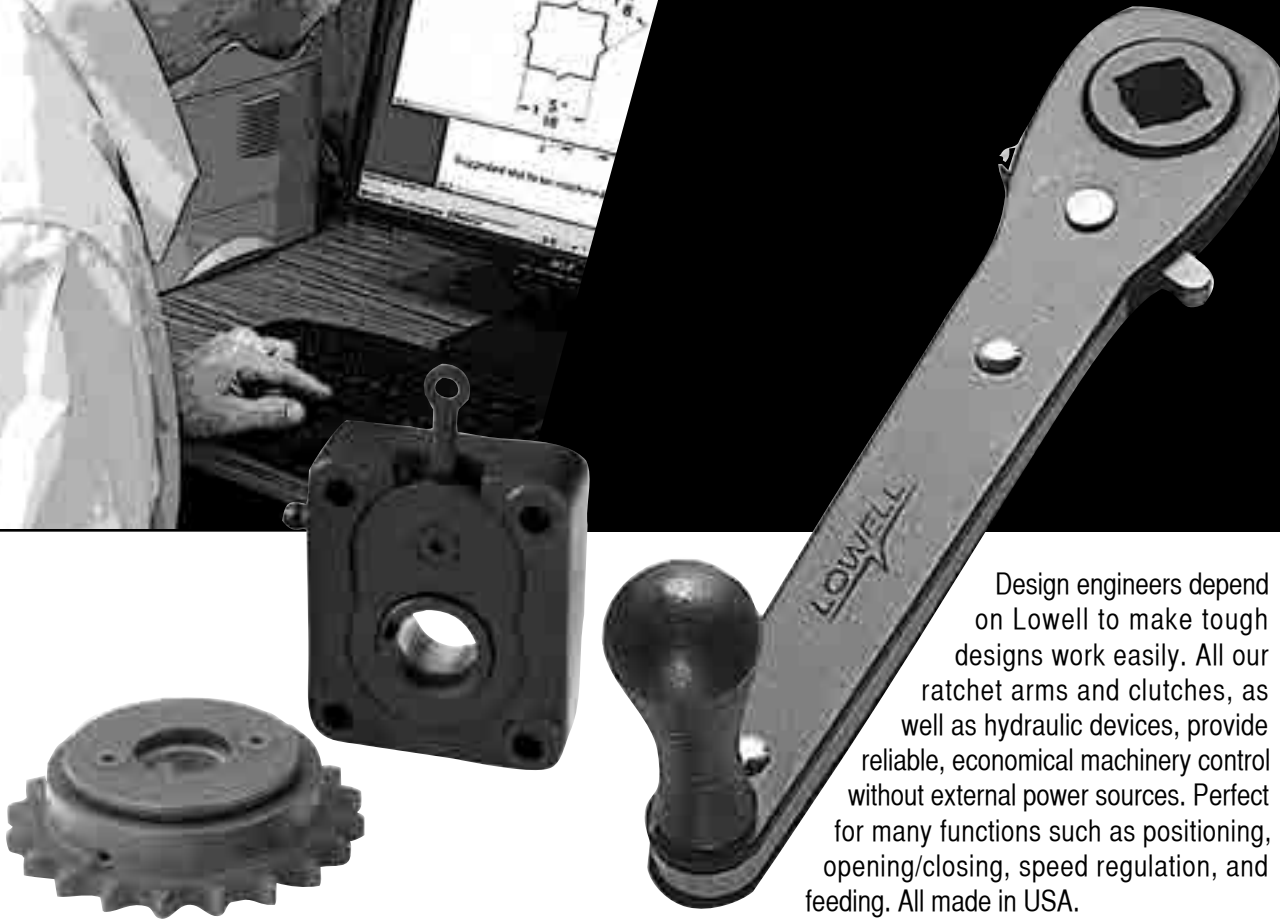
Hi-Vis Hi-Lite  
page 10

# Applications

## OEM Machine Components



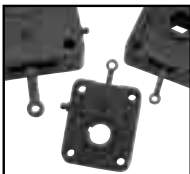
**A desktop is  
a good place to  
take it easy.**



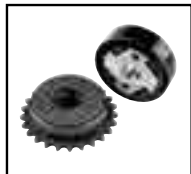
Design engineers depend on Lowell to make tough designs work easily. All our ratchet arms and clutches, as well as hydraulic devices, provide reliable, economical machinery control without external power sources. Perfect for many functions such as positioning, opening/closing, speed regulation, and feeding. All made in USA.



Ratchet Arms  
pages 18, 19



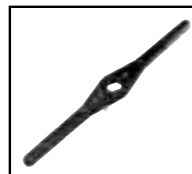
Ratchet Clutches  
pages 20, 21



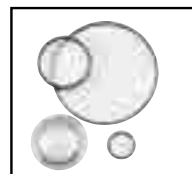
Roller Clutches  
pages 22, 23



Ratcheting  
Crank Handles  
page 14



Double Handle  
Ratchet Wrenches  
page 15



Observation  
Windows  
page 24



Custom Ratchets  
page 25

# Applications

## Plant Maintenance and Operation



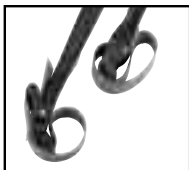
**A plant floor  
is a good place to  
take it easy.**



Many plant managers and supervisors depend on Lowell to make tough factory jobs easy. We make heavy duty ratchet and socket wrenches, ratchet clutches, and ratchet handles that enable machinery to work much more efficiently while holding down maintenance and repair costs. And rugged Lowell devices also enhance worker safety. All made in USA.



Socket Wrench Sets  
pages 12, 13



Strap Wrenches  
page 17



Valve Wheel  
Wrenches  
page 17



Torque Wrenches  
pages 12, 16



Impakdriver  
page 15



Ex-  
tended Reach  
Socket Wrench Set  
page 13

# Socket Wrenches

## Lineman's Wrenches

### Lineman's Socket Wrenches

- Designed to meet the specific needs of high line utility linemen
- Fluorescent orange, cast iron sockets make the wrench harder to lose
- Sockets fit most common utility pole fasteners: lag bolts, C clamps, and suspension bolts
- Bolt-Thru feature allows bolts and threaded rods to pass completely through the socket wrench head

### Triple Square Fabricated Handle

- Three lengths; 101T = 8", 150T = 10", 151T = 12"
- Weight: 101T = 1 1/2 lbs, 150T = 2 lbs, 151T = 2 1/8 lbs
- Three square sizes in one permanent socket; 3/4", 1", 1 1/8"
- Fabricated steel handles
- Large reversing lever on side of head
- Bolt-Thru design
- Ergonomic handle grip
- Semi-enclosed ratchet mechanism (150T & 151T only)
- Fit in most common holsters



Bolt-Thru Design

Series 150T, Model 151T

### Dual End Lineman's Socket Wrench

- Large reversing lever on side of head
- Three square sizes all in one permanent socket: 3/4", 1", 1 1/8"
- Two hex sizes in the other permanent socket: 9/16", 3/4"
  - 3/4" hex socket will also turn 5/8" sq nuts
- Fits in common holsters
- Fabricated steel handle
  - Bolt-Thru design
  - Weights: 101TDE, 2 lbs. 103TDE, 2 1/2 lbs.
  - Lengths: 101TDE, 8" 103TDE, 11"

SERIES Dual End, Model 101TDE

Series 150T, Model 101T

### 150T Series Socket Wrenches

MODEL	A		B		C		D		Socket Openings		LB	KG
	IN	MM	IN	MM	IN	MM	IN	MM	IN	MM		
101T	8 1/4	210	9 1/4	235	2 1/16	52	1 3/16	20	3/4, 1, 1 1/8 Sq	19, 25, 29 Sq	1 1/2	0,68
101T-Dual End	8 1/4	210	9 1/4	235	2 1/16	52	1 3/16	20	5/8, 3/4, 1, 1 1/8 Sq; 9/16, 3/4 H	16, 19, 25, 29 Sq; 14, 19 H	2	0,91
103T-Dual End	11 1/4	286	12 1/4	311	2 1/16	52	1 3/16	20	5/8, 3/4, 1, 1 1/8 Sq; 9/16, 3/4 H	16, 19, 25, 29 Sq; 14, 19 H	2 1/4	1,02
150Double Sq	10	254	11	280	2 1/16	52	1 3/16	20	1, 1/8 Sq	25, 29 Sq	2	0,91
150T	10	254	11	280	2 1/16	52	1 3/16	20	3/4, 1, 1 1/8 Sq	19, 25, 29 Sq	2	0,91
151Double Sq	12	305	13	330	2 1/16	52	1 3/16	20	1, 1/8 Sq	25, 29 Sq	2 1/4	1,02
151T	12	305	13	330	2 1/16	52	1 3/16	20	3/4, 1, 1 1/8 Sq	19, 25, 29 Sq	2 1/4	1,02
152	15 3/4	400	17	432	2 1/2	64	1 3/16	30	1 1/16, 1 7/16 Sq; 1 1/2 H	33, 36 Sq; 38 H	3 3/4	1,70





### Triple Square Impact Socket

- Use with any impact wrench to install or maintain utility pole hardware
- Three square sizes in one socket:
  - $1\frac{3}{16}$ " for  $\frac{1}{2}$ " hardware; 1" for  $\frac{5}{8}$ " hardware;  $1\frac{1}{8}$ " for  $\frac{3}{4}$ " hardware
- $\frac{7}{16}$ " hex quick change adapter is included
- Length:  $7\frac{3}{4}$ "; Weight: 2 lbs.



Impact Socket



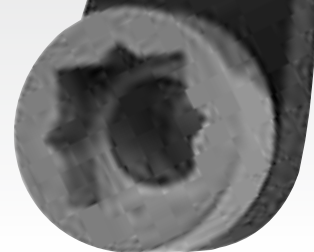
Socket Adapters



Impact Transmission Socket

### Triple Square Impact Transmission Socket

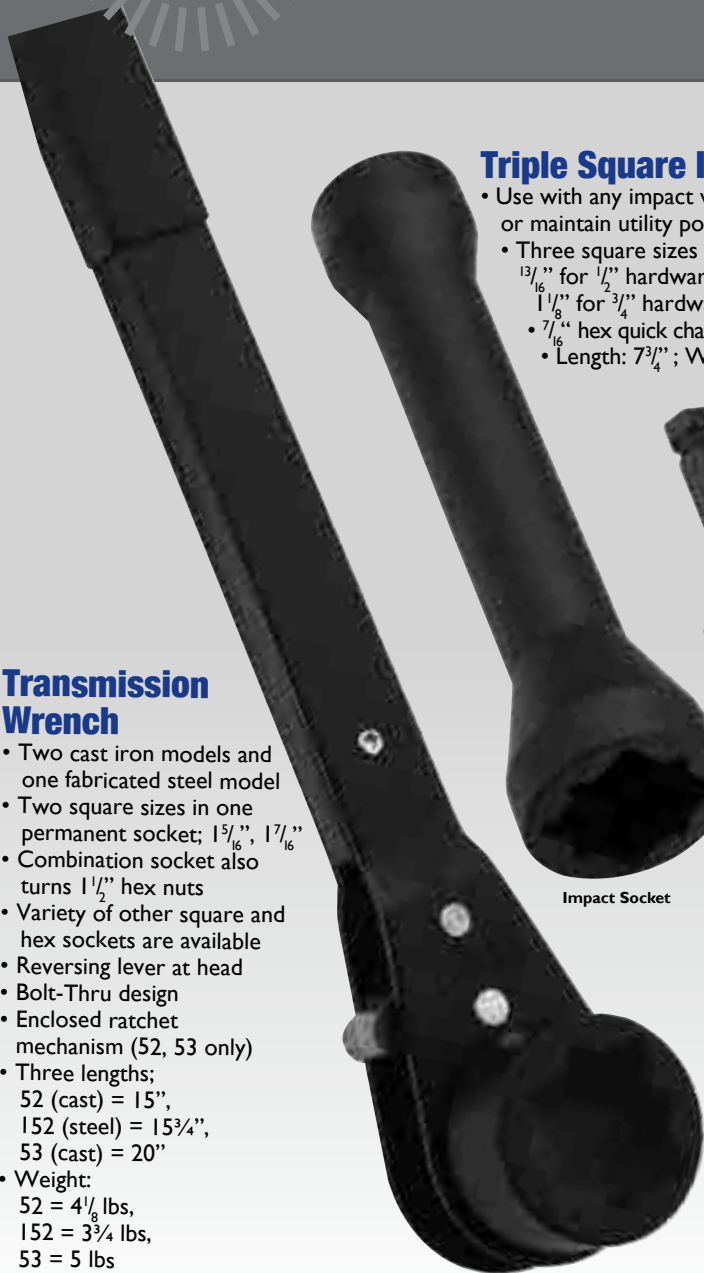
- Three square openings in one socket:
  - $1\frac{1}{8}$ " for  $\frac{3}{4}$ " hardware
  - $1\frac{5}{16}$ " for  $\frac{7}{8}$ " hardware
  - $1\frac{1}{2}$ " for 1" hardware
- $\frac{7}{16}$ " hex quick-change adapter included
  - $1\frac{1}{16}$ " diameter, 6" long hollow shaft allows use on long threaded bolts
    - Narrowed center allows easy grip with or without gloves
  - Length  $10\frac{3}{8}$ "; weight 3.5 lbs
  - 100% Made in USA



Series 50T, Model 51T

### Transmission Wrench

- Two cast iron models and one fabricated steel model
- Two square sizes in one permanent socket;  $1\frac{5}{16}$ ",  $1\frac{7}{16}$ "
- Combination socket also turns  $1\frac{1}{2}$ " hex nuts
- Variety of other square and hex sockets are available
- Reversing lever at head
- Bolt-Thru design
- Enclosed ratchet mechanism (52, 53 only)
- Three lengths;
  - 52 (cast) = 15"
  - 152 (steel) =  $15\frac{3}{4}$ "
  - 53 (cast) = 20"
- Weight:
  - 52 =  $4\frac{1}{8}$  lbs,
  - 152 =  $3\frac{3}{4}$  lbs,
  - 53 = 5 lbs



Series 150T, Model 152

### 50T Series Socket Wrenches

MODEL	A		B		C		D		Socket Openings		LB	KG
	IN	MM	IN	MM	IN	MM	IN	MM	IN	MM		
50 Double Sq	10	254	11	280	$2\frac{1}{16}$	52	$1\frac{5}{16}$	24	1, $\frac{1}{8}$ Sq	25, 29 Sq	2	0,91
50T	10	254	11	280	$2\frac{1}{16}$	52	$1\frac{5}{16}$	24	$\frac{3}{4}$ , 1, $1\frac{1}{8}$ Sq	19, 25, 29 Sq	2	0,91
51 Double Sq	12	305	13	330	$2\frac{1}{16}$	52	$1\frac{5}{16}$	24	1, $\frac{1}{8}$ Sq	25, 29 Sq	$2\frac{1}{8}$	0,96
51T	12	305	13	330	$2\frac{1}{16}$	52	$1\frac{5}{16}$	24	$\frac{3}{4}$ , 1, $1\frac{1}{8}$ Sq	19, 25, 29 Sq	$2\frac{1}{8}$	0,96
52	15	382	$16\frac{1}{8}$	410	$2\frac{7}{16}$	62	$1\frac{7}{16}$	36	$1\frac{5}{16}$ , $\frac{7}{16}$ Sq; $1\frac{1}{2}$ H	33 & 36 Sq; 38 H	$4\frac{1}{8}$	1,87
53	20	508	$21\frac{1}{8}$	536	$2\frac{7}{16}$	62	$1\frac{7}{16}$	36	$1\frac{5}{16}$ , $1\frac{7}{16}$ Sq; $1\frac{1}{2}$ H	33 & 36 Sq; 38 H	5	2,27

### Triple Square Cast Handle

- Two lengths; 50T, 10"; 51T, 12"
- Weight: 50T, 2 lbs; 51T,  $2\frac{1}{8}$  lbs
  - Enclosed ratchet mechanism
  - Fits in common holsters
  - Reversing lever at head
  - Three square sizes all in one permanent socket;
    - $\frac{3}{4}$ ", 1" &  $1\frac{1}{8}$ "
  - Cast iron handle
  - Bolt-Thru design

\* Please see Design Guide for complete ordering information.

# Socket Wrenches

## 50/150 SERIES



### Heavy Duty Socket Wrenches

- Durable for heavy-duty applications such as pipeline and construction
- Takes a wide range of square and hex sockets
- Retaining ring is easily removed for socket replacement or changeover
  - Reversing control in head
- Enclosed ratchet mechanism on Models 50, 51; semi-enclosed mechanism on Models 150, 151
- Series 150 offers a lower cost alternative without sacrificing any performance
- Ergonomic handle designs; Models 150, 151 offer choice of vinyl or padded vinyl fat grip
- Bolt-Thru design

SERIES 50

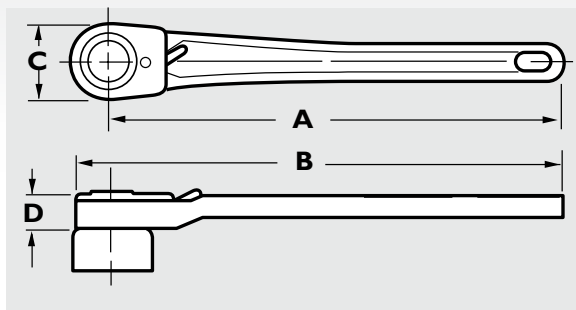
SERIES 150



### 8C 4-in-1 Socket Wrench

- Can handle four most common nut sizes found in utility and construction work: 1/4" x 1/16" hex and 1/8" x 1/16" hex.
- Rugged 17" stamped steel handle has an ergonomic grip for greater comfort
- 36 tooth ratchets yield a 10° swing—ideal for working in tight spots
- Easy-to-reverse ratchet mechanism has few parts for greater reliability
  - 200 ft. lbs. of torque for turning power without breaking
- Bolt-thru design lets bolts pass entirely through wrench head
- HiVis handle makes wrench easy to find.
- Solid metal sockets grip nuts firmly
- Weighs only 2.5 lbs.
- Made in USA

MODEL 8C



### 50 Series Socket Wrenches

Model	A		B		C		D		Socket Openings			
	in	mm	in	mm	in	mm	in	mm	in	mm	lb	kg
50	10	254	11	280	2 1/16	52	15/16	24	5/8-1 1/4	16-32	2	0,91
51	12	305	13	330	2 1/16	52	1/16	24	1 3/8-1 1/4	16-32	2 1/8	0,96
52,52F	15	382	16 1/8	410	2 7/16	62	1 7/16	36	5/8-2	22-50	4 1/8	1,87
53,53F	20	508	21 1/8	536	2 7/16	62	1 7/16	36	5/8-2	22-50	5	2,27
54	24	610	25 3/8	650	3 3/16	80	1 11/16	42	1-2 1/8	24-60	9 1/4	4,2
55	36	914	37 3/8	956	3 3/16	81	1 11/16	43	1-2 3/8	24-60	13	5,9
56	36	914	38 3/8	968	4 3/16	106	1 7/8	48	1 1/2-3 1/8	38-80	24	10,9
58	43 1/2	1105	46 3/8	1184	6 1/4	159	1 5/16	49	3-7 1/4	80-175	47	21,2
60	60	1524	64 3/8	1642	9 1/4	235	2 1/2	64	5-9 1/8	125-230	100	45,0

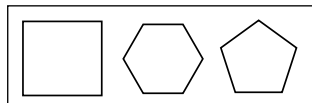
### 150 Series Socket Wrenches

150	10	254	11	280	2 1/16	52	13/16	20	5/8-1 1/4	16-32	2	0,91
151	12	305	13	330	2 1/16	52	13/16	20	5/8-1 1/4	16-32	2 1/8	0,96
DS 1-9	12	305	13	330	2 1/16	52	13/16	20	3/4-1 1/4	19-32	2 1/4	1,02
152	15 1/4	400	17	432	2 1/2	64	1 3/16	30	5/8-2	22-50	3 3/4	1,70
158	8	204	9	228	2 3/8	52	13/16	20	5/8-1 1/4	16-32	1 3/4	0,79

### QR Series Socket Wrenches

50 QR	10	254	11	280	2 1/16	52	15/16	24	5/8-1 1/4	16-32	2	0,91
51 QR	12	305	13	330	2 1/16	52	15/16	24	5/8-1 1/4	16-32	2 1/8	0,96
52 QR	15	382	16 1/8	410	2 7/16	62	1 7/16	36	5/8-2	22-50	4 1/8	1,87
53 QR	20	508	21 1/8	536	2 7/16	62	1 7/16	36	5/8-2	22-50	5	2,27
564 QR	15 1/2	394	16 1/2	420	2 1/16	52	15/16	24	5/8-1 1/4	16-32	3 1/4	1,48

### Socket Openings



### Quick-Release

Makes socket changing fast and easy.

Available on Models 50, 51, 52, 53, and 564.



# Double Shot SERIES

## Heavy Duty Dedicated Socket Wrenches

- Designed specifically for pipeline, utility, maintenance and construction workers.
- Nine socket size combinations for heavy, standard, and metric hex nuts, as well as hydrant repair
- Sockets made of rugged cast metal
- Fluorescent orange sockets make the wrenches harder to lose
- Handle and sockets coated with durable electrostatic epoxy paint for easy cleaning
- Reversing control in head
  - Stamped, riveted handle
  - Vinyl grip makes working comfortable and secure
  - All wrenches 12" long, weight 2 1/4 lbs.
- Bolt-Thru design



### Double Shot Series Socket Wrenches

Model	Hex Size	Application
DS-1	1 1/4" & 1 1/16"	Mechanical joints, restraints, repair clamps, service saddles
DS-2	1 1/8" & 15/16"	Flange bolts, friction clamps, hydrant break flange, bonnet bolts
DS-3	15/16" & 3/4"	Hydrant break flange, bonnet bolts, friction clamps, service saddles
DS-4	3/4" & 7/8"	Extended range couplings below 14"
DS-5	19mm & 22mm	Extended range couplings below 14"
DS-6	1 1/8" & 1 1/16"	Gas/water industry couplings, repair clamps, service saddles, flange bolts
DS-7	17mm & 22mm (international)	Mechanical joints, restraints, repair clamps, service saddles
DS-8	22mm & 24mm (international)	Mechanical joints, restraints, repair clamps, service saddles
DS-9	24mm & 30mm (international)	Mechanical joints, restraints, repair clamps, service saddles

# 50F/QR SERIES

## Series 50F Heavy Duty Hydrant Wrenches

- For US-style water hydrants
- Unique Bolt-Thru design
- Available in 2 sizes: 52F and 53F
- Opens and closes any hydrant in only a 22 1/2° swing
- Long handle and pentagon socket for better leverage
- Sockets adjust by thumb screw for versatile set up
- Socket has 9/16" square opening, accessible by turning wrench over
  - Bolt-Thru design

## Series QR Reversible Wrenches with Quick Release

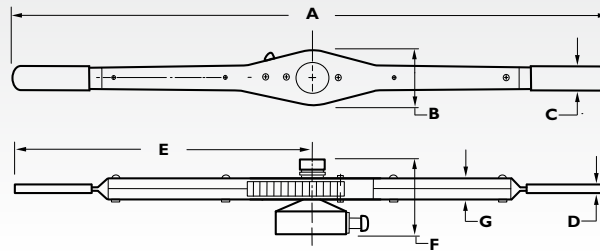
- Model 564 QR has multi-angle handle adjustable in 30° increments
- Quick-Release for fast socket changes: Models 50, 51, 52, 53 and 564
- Unique Bolt-Thru design

SERIES 50F

MODEL 564

## Model 252F Hydrant Wrench

- Two handles give greater leverage for loosening and tightening nuts
- Improves safety by allowing operator to always face the road
- Permits two-person operation



### 200 Series Double Handle Hydrant Wrench

Model	A		B		C		D		E		F		G		Sockets		
	in	mm	in	mm	in	mm	in	mm	in	mm	in	mm	in	mm	lb	kg	
252	32 1/2	826	2 5/8	68	1	25	5/16	8	16 1/4	413	3 3/4	83	1 1/4	32	1 1/2-2	38-51	6 1/4, 2,84

\* Please see Design Guide for complete ordering information.



# Socket Sets

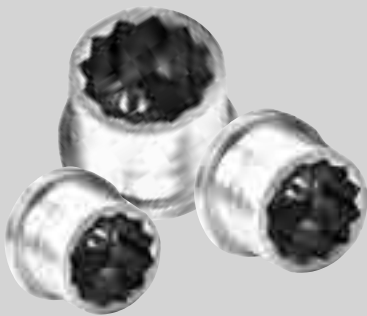
## Valve Key/511/512/513

### Valve Key Socket Set

#### Easily engage worn or corroded valve nuts

Lowell Valve Key Sockets are specifically designed to easily engage rounded-over or deformed valve nuts in the toughest situations, even when corrosion is significant.

- Field-proven
- Compact size
- Lower cost than alternative tools
- No moving parts for lower maintenance
- Rugged, durable, yellow zinc-plated, hardened steel components
- Set includes: valve key sockets in 3 sizes (small, medium, large), 3" screw, and attachment plate in a durable carrying case
- 8 lbs.



### 511 and 512 Ratchet Wrench Sets

#### For gas and water pipeline applications

- Unique Bolt-Thru design
- Quick-Release for fast socket changeover
- Reversing levers in head
- Combines standard international sockets and special devices for US-style Buffalo and Erie type water main curb boxes, hydrants and corporation stops
- Standard 511 set includes: 51 QR ratchet handle;  $\frac{7}{8}$ "",  $\frac{15}{16}$ "",  $1\frac{1}{8}$ "",  $1\frac{1}{4}$ " hex sockets; heavy-duty steel box. US version includes corporation socket 7 lbs.
- Standard 512 set includes: 51 QR ratchet handle;  $\frac{3}{4}$ "",  $\frac{7}{8}$ "",  $\frac{15}{16}$ "",  $1\frac{1}{16}$ "",  $1\frac{1}{8}$ "",  $1\frac{1}{4}$ " hexagonal sockets; extension bar; Buffalo ( $2\frac{1}{4}$ " spanner) and Erie ( $\frac{7}{8}$ " pentagonal) socket; corporation socket; and heavy-duty steel box
- 11 lbs.



MODEL 511



MODEL 512

### 513 Ratchet Torque Wrench Set

#### For gas and water pipeline applications

- Unique Bolt-Thru design
- 0-160 lb/ft torque indicating wrench
- Ratchet adapter with Quick-Release for fast socket changeover
- Chrome-plated torque wrench
- Easy-to-read. Can be used as a standard  $1/2$ " male drive torque wrench as well
- Standard set includes: 560 torque wrench (0-160 lb/ft)  $18\frac{3}{4}$ " long with  $\frac{1}{2}$ " square male drive;  $3\frac{1}{2}$ " ratchet adapter,  $\frac{3}{4}$ "",  $\frac{7}{8}$ "",  $\frac{15}{16}$ "",  $1\frac{1}{16}$ "",  $1\frac{1}{8}$ "",  $1\frac{1}{4}$ " hex sockets; heavy-duty steel box
- 13 lbs.



MODEL 513

# Extended Reach/DoubleShot/521/531/514



## Extended Reach Ratchet Wrench Set Greater leverage in tight spots

- Ideal for attaching mechanical joints in close quarters
- Each socket extends 3½" from the handle to allow for clearance over obstacles
- Quick-Release for fast socket changeover
- Bolt-Thru design
- Standard set includes: Model 51 quick release handle; five sockets; 7/8", 15/16", 1/16", 1/8", 1/4" hexagonal extended sockets; heavy-duty molded plastic case
- 10 lbs.



## DoubleShot Ratchet Wrench Sets Designed for specific applications

- Mechanical joints, restraints, couplings, sleeves, repair clamps, saddles, flange bolts
- Installation Set includes: DS-1 1¼" x 1/16"; DS-2 1½" x 15/16"; DS-4 ¾" x 7/8"
- Repair Set includes: DS-1 1¼" x 1/16"; DS-2 1½" x 15/16"; DS-3 15/16" x 3/4"
- Also available:  
Other sizes listed on page 11  
DS-LC Economy Set
- Each set includes three DoubleShot wrenches in a heavy-duty molded plastic case
- 10 lbs.



## 521 and 531 Ratchet Wrench Sets

For larger applications: utility and pipeline transmission and distribution, maintenance, and construction

- Large size international sockets
- Longer handles for increased leverage
- Unique Bolt-Thru design
- Quick-Release for fast socket changeover
- Reversing levers in head
- Standard 521 set includes: 52 QR ratchet handle; 1/4", 15/16", 17/16", 1/2", 15/8" hex sockets; heavy-duty steel box can hold three additional sockets which may be ordered with set 13.5 lbs.
- Standard 531 set includes: 53 QR handle; 1/4", 15/16", 17/16", 1/2", 15/8" hex sockets; heavy-duty steel box can hold three additional sockets which may be ordered with set 14 lbs.



MODEL 521



MODEL 531

## 514 Adjustable Angle Ratchet Wrench Set

For ratchet action in close quarters

- Multi-angle handle adjustable in 30° increments
- Locks quickly via wing nut
- Quick-Release for fast socket changeover
- Shear pin design to prevent overtorquing
- Standard set includes: Adjustable 564 QR handle; 3½" ratchet adapter; 3/4", 7/8", 15/16", 1/16", 1/8", 1/4" hexagonal sockets; heavy-duty steel box
- 11 lbs.



MODEL 514

\* Please see Design Guide for complete ordering information.

# Crank Handles

## 100 SERIES

### Easier more efficient machinery adjustment

- Fixed or rotating metal handle for extra durability
- Bolt-Thru design
- Rotating plastic handle for lower cost.
- Performs many adjustments including cross feed, rise and fall, gib and quill, positioning screw, or clamping
- Ratchet arm lengths range from 7" to 12"
- Reversing control located in the head to reverse the action safely and easily
- Available in square, hex, bore and keyway, or custom openings

MODEL 101 CRANK

MODEL 103 CRANK

MODEL 114 CRANK

MODEL 112 CRANK

### 100 Series Ratcheting Crank Handles

Model	A		B		C		D		Gear Openings		lb	kg	Crank Options
	in	mm	in	mm	in	mm	in	mm	in	mm			
101	7	180	7 <sup>3</sup> / <sub>16</sub>	198	1 <sup>1</sup> / <sub>16</sub>	40	<sup>19</sup> / <sub>32</sub>	15	<sup>3</sup> / <sub>8</sub> - <sup>3</sup> / <sub>4</sub>	10-19	<sup>3</sup> / <sub>4</sub> -1	0,34-0,45	<b>Models 101, 101A, 112, 114, 115</b> Steel or Plastic; Fixed or Revolving; Long or Short
101A	7	180	8 <sup>1</sup> / <sub>16</sub>	205	2 <sup>1</sup> / <sub>16</sub>	52	<sup>19</sup> / <sub>32</sub>	15	<sup>1</sup> / <sub>2</sub> -1	13-25	<sup>3</sup> / <sub>4</sub> -1	0,34-0,45	
103	12	305	13 <sup>1</sup> / <sub>2</sub>	342	2 <sup>1</sup> / <sub>2</sub>	64	<sup>7</sup> / <sub>8</sub>	22	<sup>1</sup> / <sub>2</sub> -1 <sup>1</sup> / <sub>4</sub>	12-32	2 <sup>1</sup> / <sub>4</sub> -2 <sup>3</sup> / <sub>4</sub>	1,02-1,25	
112	8	204	9	228	2 <sup>1</sup> / <sub>16</sub>	52	<sup>7</sup> / <sub>8</sub>	22	<sup>1</sup> / <sub>2</sub> -1	13-25	1 <sup>1</sup> / <sub>2</sub> -2	0,68-0,91	<b>Model 103</b> Steel or Plastic; Fixed or Revolving
114	10	254	11	280	2 <sup>1</sup> / <sub>16</sub>	52	<sup>7</sup> / <sub>8</sub>	22	<sup>1</sup> / <sub>2</sub> -1	13-25	2-2 <sup>1</sup> / <sub>2</sub>	0,91-1,13	
115	12	305	13	330	2 <sup>1</sup> / <sub>16</sub>	52	<sup>7</sup> / <sub>8</sub>	22	<sup>1</sup> / <sub>2</sub> -1	13-25	2-2 <sup>1</sup> / <sub>2</sub>	0,91-1,13	

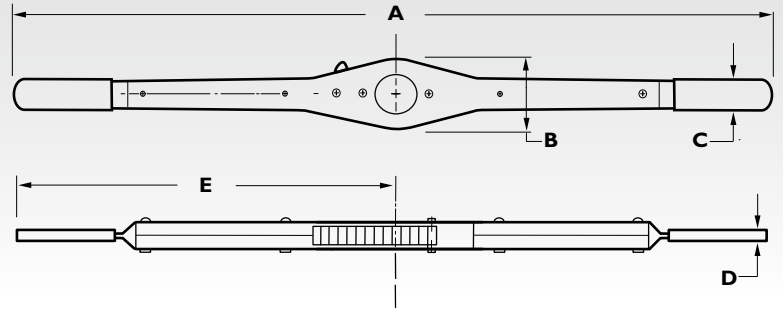
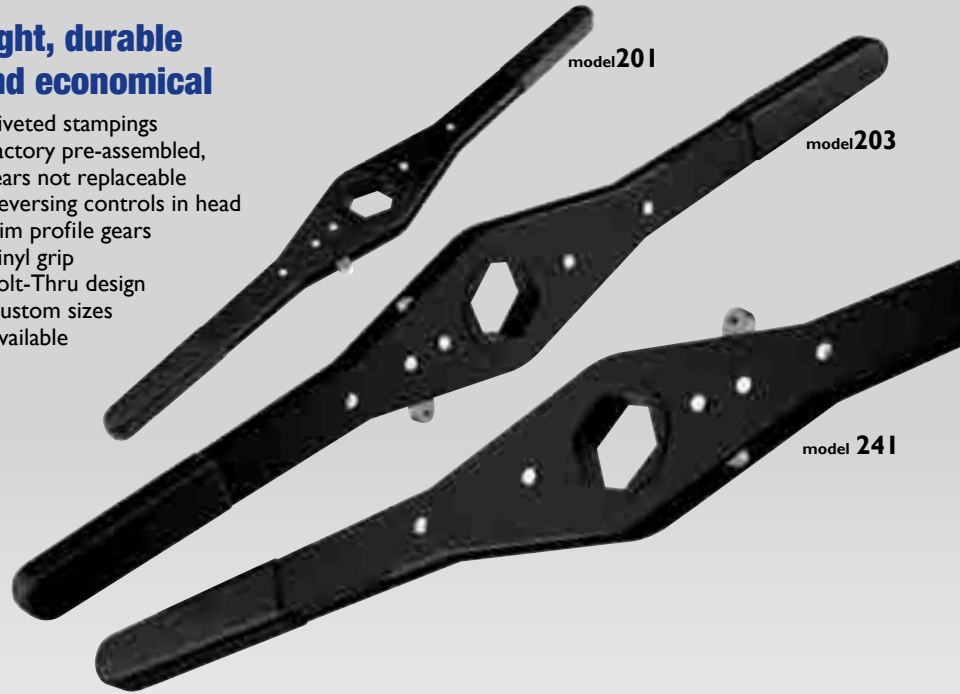
## 200 SERIES

### Easily loosen and tighten frozen fasteners

- Tighten or loosen screws, nuts and bolts with a hammer blow
- Quick, easy, and safe
- Rugged construction for long-term durability and reliability
- Prevents expensive, unnecessary damage to fasteners and machinery
- Available in five different sets, with and without bits and sockets.
- Available bits include both straight and Phillips
- Available hex sockets for use with 0690M (3/8") Impakdriver

### Light, durable and economical

- Riveted stampings
- Factory pre-assembled, gears not replaceable
- Reversing controls in head
- Slim profile gears
- Vinyl grip
- Bolt-Thru design
- Custom sizes available



### 200 Series Double Handle Wrenches

in mm in mm in mm lb kg

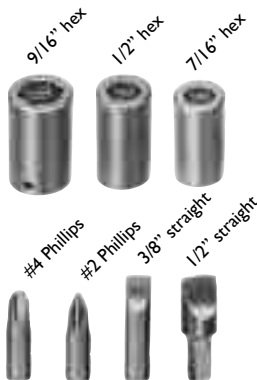
201

203241

### Impakdriver

Model	Contents	Drive	Length	Dia.	Bits	Hex Sockets	lb	kg
		in	in mm	in mm				
0690M	Driver	3/8	4 7/8 124	1 1/4 32	None	None	1 1/8	0,51
0690MG	Driver	1/2	4 7/8 124	1 1/4 32	None	None	1 1/8	0,51
0065M	Set	3/8	4 7/8 124	1 1/4 32	4*	None	1 1/2	0,68
0067M	Set	3/8	4 7/8 124	1 1/4 32	4*	7/16, 1/2, 9/16	1 3/4	0,79
0065MG	Set	1/2	4 7/8 124	1 1/4 32	4*	None	1 1/2	0,68

\* 3/8 straight 1/2 straight #2 phillips #4 phillips



# Torque Wrenches

## T-Torker® SERIES

### T-Torker® Wrenches

For repetitive jobs requiring identical torque settings

- Highly durable
- Provides audible overrunning when any factory-preset torque is reached
- Torque values accurate to ±10%
- Fast, easy one-handed tightening in the right-hand direction
- Size and weight designed for hand comfort
- T-shape creates effective leverage
- Flanged reversing collar disengages the ratchet mechanism and locks the tool for conventional backing off and loosening
- All mechanisms are sealed in die-cast handle and lubricated for the normal life of the tool
- Available in three models: Utility, Industrial, and ratchet-only



### Series T-TM

For industrial applications

- Designed to accommodate any factory-preset torque limit and variety of shaft-end accessories
- Applications include: production, assembly, inspection, quality control, field service, in-plant set up and maintenance
- Torque range is 5-80 lb-in
- Settings should be in 5 lb-in increments
- Customized shafts available on request

### Series T-T

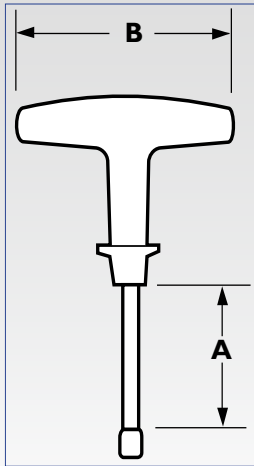
For Utility applications

- Specifically designed for US-style, No-HUB® cast iron soil pipe installations as prescribed by the Cast Iron Soil Pipe Institute
- Factory-preset and sealed to values of 60, 75, or 80 lb-in
- 5/16" or 3/8" hexagonal socket hardened to 42-48 Rc is forged on end of drive shaft

### Series TR

For maintenance applications

The TR series consists of no-torque ratchet T-handle wrenches whose superior design and construction makes them suitable for a variety of applications



### T-Torker Kit

For plumbing and utility applications

- All the tools needed to tighten all standard screws on No-HUB couplings to either 60 or 80 lb-in.
- Kit contains two T-Torker wrenches and three hex sockets: 1/4", 5/16", 3/8"
- Each wrench labeled with its torque setting and color-coded for easy identification in low light
- Kit is available in durable case with strap and belt loops



### Torque Wrenches

Model	No.	Drive Type	A		B		Torque			kg	Basic Application
			in	mm	in	mm	lb-in	nm	lb		
T-T	3T000	5/16 hex female	2 1/2	61	4	98	60 or 75	6,8 or 8,5	7/8	0,40	Utility
T-T	3T001	3/8 hex female	2 1/2	61	4	98	80	9,0	7/8	0,40	Utility
T-M	3M000	1/4 sq male	1 7/8	46	4	98	5-80	0,55-9,0	7/8	0,40	Industrial
T-R	3R000	1/4 sq male	1 7/8	46	4	98	N/A	N/A	7/8	0,40	Maintenance
T-60 Kit	K000	1/4, 5/16, 3/8 female	2 1/2	61	4	98	60 or 80	6,8 or 9,0	7/8	0,40	Utility, Plumbing

\* Please see Design Guide for complete ordering information.



# Valve Wheel Wrenches

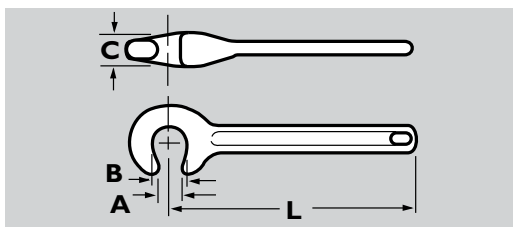
For added force to turn frozen wheels

- Rugged, cast iron or aluminum
- Large size, non-ratcheting extension arms
- Specially-shaped end opening engages without slipping or marring surfaces
- Available in 4 lengths: 8", 15", 22", and 30"



## Valve Wheel Wrenches

Model	L		A		B		C		lb	kg
	in	mm	in	mm	in	mm	in	mm		
<b>Cast Iron</b>										
V0	8	204	2 <sup>1</sup> / <sub>32</sub>	17	3 <sup>3</sup> / <sub>4</sub>	19	1	25	1	0,45
V1	15	381	1	25	1 <sup>3</sup> / <sub>16</sub>	30	1 <sup>3</sup> / <sub>8</sub>	35	1 <sup>7</sup> / <sub>8</sub>	0,85
V2	22	559	1 <sup>3</sup> / <sub>16</sub>	33	1 <sup>1</sup> / <sub>2</sub>	38	2	51	7 <sup>1</sup> / <sub>2</sub>	3,40
V3	30	762	2	51	2 <sup>3</sup> / <sub>16</sub>	56	2 <sup>1</sup> / <sub>2</sub>	64	11	5,0
<b>Aluminum</b>										
V0	8	204	2 <sup>1</sup> / <sub>32</sub>	17	3 <sup>3</sup> / <sub>4</sub>	19	1	25	1/4	0,11
V1	14	356	1	25	1 <sup>3</sup> / <sub>16</sub>	30	1 <sup>3</sup> / <sub>8</sub>	35	1	0,45
V2	20 <sup>1</sup> / <sub>2</sub>	521	1 <sup>3</sup> / <sub>8</sub>	35	1 <sup>1</sup> / <sub>2</sub>	38	2	51	2 <sup>1</sup> / <sub>8</sub>	0,96



# Strap Wrenches

## The Warnock

For handling highly-polished surfaces

- Cast metal handle
- Strap made of polyester yarn coated with latex for durability and extra grip
- Drop-forged shackle swings away from handle for quick strap adjustment, securely holds strap in closed position and provides extra turning force
- Custom strap lengths are available on request

Warnock



Simplex

## The Simplex

For heavy-duty applications

- Cast metal handle
- Strap made of polyester yarn coated with latex for durability and extra grip
- Strap and unique nose configuration provides powerful gripping
- Conforms to US Federal Spec. GGG-W-651, Type V
- Custom strap lengths available on request

## Strap Wrenches

Model	Handle Length		Strap Width		Strap Length		Turning Capacity		Torque Rating		lb	kg
	in	mm	in	mm	in	mm	in	mm	lb-ft	nm		
<b>Warnock</b>												
W-12	12	305	1 <sup>1</sup> / <sub>4</sub>	32	17	430	2	51	188	255	1 <sup>1</sup> / <sub>2</sub>	0,67
W-18	18	458	1 <sup>3</sup> / <sub>4</sub>	44	30	760	5	127	250	339	3 <sup>1</sup> / <sub>2</sub>	1,57
W-24	24	610	2 <sup>1</sup> / <sub>4</sub>	58	54	1370	12	305	330	447	6 <sup>1</sup> / <sub>2</sub>	2,92
<b>Simplex</b>												
S-6	6	153	1/2	13	22	559	4	102	20	27	1/6	0,06
S-12	12	305	1 <sup>1</sup> / <sub>4</sub>	32	17	430	2	51	188	255	1 <sup>1</sup> / <sub>2</sub>	0,67
S-18	18	458	1 <sup>3</sup> / <sub>4</sub>	44	30	760	5	127	250	339	3	1,35
S-24	24	610	2 <sup>1</sup> / <sub>4</sub>	58	54	1370	12	305	330	447	5	2,25

# Ratchet Arms

## 100 SERIES

### Low cost adjustable arms

- Riveted stampings
- Factory pre-assembled, gears not replaceable
- Reversing controls in head
- Slim profile gears
- Vinyl grip on 112, 114 & 115
- Bolt-Thru design



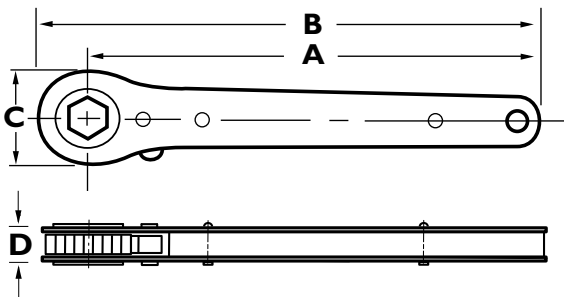
MODEL 101

MODEL 103

MODEL 112, 114, 115

### 100 Series Ratchet Arms

Model	A		B		C		D		Gear Openings		lb	kg
	in	mm	in	mm	in	mm	in	mm	in	mm		
101	7	180	7 <sup>13</sup> / <sub>16</sub>	198	1 <sup>1</sup> / <sub>16</sub>	40	1 <sup>9</sup> / <sub>32</sub>	15	3 <sup>3</sup> / <sub>8</sub> -3 <sup>1</sup> / <sub>4</sub>	10-19	3 <sup>3</sup> / <sub>4</sub>	0,34
101A	7	180	8 <sup>1</sup> / <sub>16</sub>	205	2 <sup>1</sup> / <sub>16</sub>	52	1 <sup>9</sup> / <sub>32</sub>	15	1 <sup>1</sup> / <sub>2</sub> -1	13-25	3 <sup>3</sup> / <sub>4</sub>	0,34
103	12	305	13 <sup>1</sup> / <sub>2</sub>	342	2 <sup>1</sup> / <sub>2</sub>	64	7 <sup>1</sup> / <sub>8</sub>	22	1 <sup>1</sup> / <sub>2</sub> -1 <sup>1</sup> / <sub>4</sub>	12-32	2 <sup>1</sup> / <sub>4</sub>	1,02
112	8	204	9	228	2 <sup>1</sup> / <sub>16</sub>	52	7 <sup>1</sup> / <sub>8</sub>	22	1 <sup>1</sup> / <sub>2</sub> -1	13-25	1 <sup>1</sup> / <sub>2</sub>	0,68
114	10	254	11	280	2 <sup>1</sup> / <sub>16</sub>	52	7 <sup>1</sup> / <sub>8</sub>	22	1 <sup>1</sup> / <sub>2</sub> -1	13-25	2	0,91
115	12	305	13	330	2 <sup>1</sup> / <sub>16</sub>	52	7 <sup>1</sup> / <sub>8</sub>	22	1 <sup>1</sup> / <sub>2</sub> -1	13-25	2	0,91



## 10/10z/40 SERIES

### Basic Ratchet Arms

- Cast malleable iron
- Durable in rugged, heavy-duty applications
- Reversing controls in head
- Enclosed, replaceable gears
- Wide range of standard and special openings available
- Slim profile
- Conform to US Federal Spec. GGG-W-653, Type I, Class I
- Bolt-Thru design



SERIES 10

SERIES 10z

### 10 Series Ratchet Arms

Model	A		B		C		D		E		Gear Openings		lb	kg
	in	mm	in	mm	in	mm	in	mm	in	mm	in	mm		
11	6	152	6 <sup>15</sup> / <sub>16</sub>	176	1 <sup>13</sup> / <sub>16</sub>	46	2 <sup>23</sup> / <sub>32</sub>	18			3 <sup>3</sup> / <sub>8</sub> -3 <sup>1</sup> / <sub>4</sub>	10-19	1	0,45
12	8	204	9	228	1 <sup>15</sup> / <sub>16</sub>	50	7 <sup>1</sup> / <sub>8</sub>	22			3 <sup>3</sup> / <sub>8</sub> -3 <sup>1</sup> / <sub>4</sub>	10-19	1	0,45
13	10	254	11	280	1 <sup>15</sup> / <sub>16</sub>	50	7 <sup>1</sup> / <sub>8</sub>	22			3 <sup>3</sup> / <sub>8</sub> -3 <sup>1</sup> / <sub>4</sub>	10-19	1 <sup>1</sup> / <sub>2</sub>	0,68
14	10	254	11 <sup>1</sup> / <sub>4</sub>	286	2 <sup>5</sup> / <sub>16</sub>	59	1 <sup>13</sup> / <sub>16</sub>	20			1 <sup>1</sup> / <sub>2</sub> -1	13-25	1 <sup>3</sup> / <sub>4</sub>	0,79
15	12	305	13 <sup>1</sup> / <sub>4</sub>	336	2 <sup>5</sup> / <sub>16</sub>	59	1 <sup>13</sup> / <sub>16</sub>	20			1 <sup>1</sup> / <sub>2</sub> -1	13-25	2	0,91
16	15	382	16 <sup>1</sup> / <sub>2</sub>	420	3	76	1 <sup>7</sup> / <sub>32</sub>	30			1 <sup>1</sup> / <sub>2</sub> -1 <sup>1</sup> / <sub>2</sub>	13-36	4 <sup>3</sup> / <sub>4</sub>	2,16
17	18	458	19 <sup>1</sup> / <sub>2</sub>	495	3	76	1 <sup>7</sup> / <sub>32</sub>	30			1 <sup>1</sup> / <sub>2</sub> -1 <sup>1</sup> / <sub>4</sub>	13-36	5 <sup>1</sup> / <sub>2</sub>	2,50

### 10Z Series Ratchet Arms

11Z	6	152	6 <sup>15</sup> / <sub>16</sub>	176	1 <sup>13</sup> / <sub>16</sub>	46	2 <sup>23</sup> / <sub>32</sub>	18	2 <sup>1</sup> / <sub>2</sub>	64	3 <sup>3</sup> / <sub>8</sub> -3 <sup>1</sup> / <sub>4</sub>	10-19	1	0,45
12Z	8	204	9	228	1 <sup>15</sup> / <sub>16</sub>	50	7 <sup>1</sup> / <sub>8</sub>	22	2 <sup>1</sup> / <sub>2</sub>	64	3 <sup>3</sup> / <sub>8</sub> -3 <sup>1</sup> / <sub>4</sub>	10-19	1	0,45
13Z	10	254	11	280	1 <sup>15</sup> / <sub>16</sub>	50	7 <sup>1</sup> / <sub>8</sub>	22	2 <sup>1</sup> / <sub>2</sub>	64	3 <sup>3</sup> / <sub>8</sub> -3 <sup>1</sup> / <sub>4</sub>	10-19	1 <sup>1</sup> / <sub>2</sub>	0,68
14Z	10	254	11 <sup>1</sup> / <sub>4</sub>	286	2 <sup>5</sup> / <sub>16</sub>	59	1 <sup>13</sup> / <sub>16</sub>	20	3	76	1 <sup>1</sup> / <sub>2</sub> -1	13-25	1 <sup>3</sup> / <sub>4</sub>	0,79
15Z	12	305	13 <sup>1</sup> / <sub>4</sub>	336	2 <sup>5</sup> / <sub>16</sub>	59	1 <sup>13</sup> / <sub>16</sub>	20	3	76	1 <sup>1</sup> / <sub>2</sub> -1	13-25	2	0,91
16Z	15	382	16 <sup>1</sup> / <sub>2</sub>	420	3	76	1 <sup>7</sup> / <sub>32</sub>	30	4	102	1 <sup>1</sup> / <sub>2</sub> -1 <sup>1</sup> / <sub>2</sub>	13-36	4 <sup>3</sup> / <sub>4</sub>	2,16
17Z	18	458	19 <sup>1</sup> / <sub>2</sub>	495	3	76	1 <sup>7</sup> / <sub>32</sub>	30	4	102	1 <sup>1</sup> / <sub>2</sub> -1 <sup>1</sup> / <sub>4</sub>	13-36	5 <sup>1</sup> / <sub>2</sub>	2,50

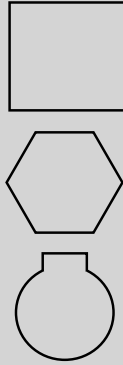
\* Please see Design Guide for complete ordering information.



# 10/10z/40 SERIES



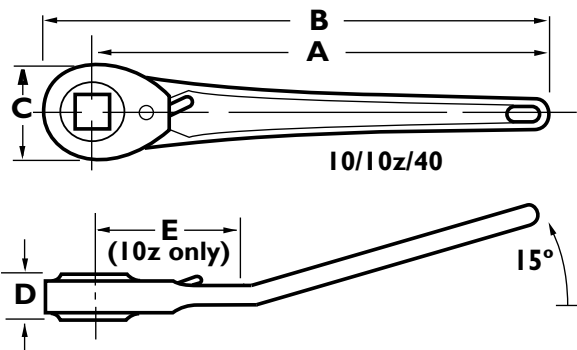
Gear Openings



SERIES 40

## 40 Series Ratchet Arms

Model	A		B		C		D		Gear Openings		lb	kg
	in	mm	in	mm	in	mm	in	mm	in	mm		
41	24	610	25 <sup>7</sup> / <sub>8</sub>	645	3 <sup>3</sup> / <sub>4</sub>	95	1 <sup>3</sup> / <sub>8</sub>	35	3 <sup>3</sup> / <sub>4</sub> -1 <sup>13</sup> / <sub>16</sub>	19-46	12	5,44
42	36 <sup>1</sup> / <sub>4</sub>	920	38 <sup>3</sup> / <sub>4</sub>	972	3 <sup>3</sup> / <sub>4</sub>	95	1 <sup>3</sup> / <sub>8</sub>	35	3 <sup>3</sup> / <sub>4</sub> -1 <sup>13</sup> / <sub>16</sub>	19-46	14	6,35
44	36	914	38 <sup>7</sup> / <sub>16</sub>	976	4 <sup>7</sup> / <sub>16</sub>	124	1 <sup>1</sup> / <sub>2</sub>	38	1 <sup>1</sup> / <sub>16</sub> -2 <sup>3</sup> / <sub>8</sub>	27-60	16	7,26
45	24	610	27	686	6 <sup>1</sup> / <sub>8</sub>	156	1 <sup>11</sup> / <sub>16</sub>	43	1 <sup>11</sup> / <sub>16</sub> -3 <sup>1</sup> / <sub>4</sub>	42-80	16	7,26
46	38	965	41 <sup>1</sup> / <sub>16</sub>	1042	6 <sup>1</sup> / <sub>8</sub>	156	1 <sup>15</sup> / <sub>32</sub>	38	1 <sup>11</sup> / <sub>16</sub> -3 <sup>1</sup> / <sub>4</sub>	42-80	25	11,35
47	42	1066	45 <sup>11</sup> / <sub>16</sub>	1160	7 <sup>3</sup> / <sub>8</sub>	188	1 <sup>3</sup> / <sub>4</sub>	44	2 <sup>1</sup> / <sub>16</sub> -3 <sup>3</sup> / <sub>8</sub>	70-95	37	16,8
48	43 <sup>7</sup> / <sub>16</sub>	1107	48	1219	8 <sup>3</sup> / <sub>16</sub>	224	1 <sup>7</sup> / <sub>8</sub>	48	2 <sup>3</sup> / <sub>4</sub> -4 <sup>7</sup> / <sub>8</sub>	70-120	56	25,2



# 20 SERIES

## Heavy Duty, remote reversing Ratchet Arms

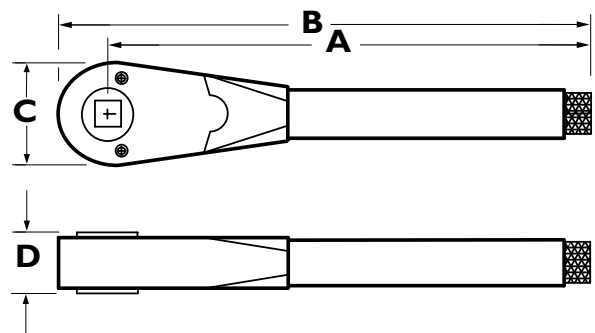
- Knurled knob operates on half-turn for maximum safety and convenience
- Durable for heavy-duty applications
- Enclosed, replaceable gears
- Wide range of standard and special openings and lengths
- Conform to Federal Spec. GGG-W-653, Type I, Class 2
- Bolt-Thru design



SERIES 20

## 20 Series Ratchet Arms

Model	A		B		C		D		Gear Openings		lb	kg
	in	mm	in	mm	in	mm	in	mm	in	mm		
21	7 <sup>3</sup> / <sub>8</sub>	188	8 <sup>3</sup> / <sub>16</sub>	208	1 <sup>3</sup> / <sub>16</sub>	40	1 <sup>3</sup> / <sub>16</sub>	20	3 <sup>1</sup> / <sub>16</sub> -3 <sup>9</sup> / <sub>32</sub>	10-14	1	0,45
22	10 <sup>1</sup> / <sub>2</sub>	266	11 <sup>1</sup> / <sub>2</sub>	292	2	50	1	25	3 <sup>3</sup> / <sub>8</sub> -3 <sup>1</sup> / <sub>4</sub>	10-19	2	0,91
23	12 <sup>3</sup> / <sub>8</sub>	314	13 <sup>3</sup> / <sub>16</sub>	345	2 <sup>3</sup> / <sub>8</sub>	60	1 <sup>1</sup> / <sub>8</sub>	28	1 <sup>1</sup> / <sub>2</sub> -1	13-25	3 <sup>1</sup> / <sub>2</sub>	1,59
24	15 <sup>3</sup> / <sub>16</sub>	395	17 <sup>1</sup> / <sub>8</sub>	434	3 <sup>1</sup> / <sub>8</sub>	80	1 <sup>7</sup> / <sub>32</sub>	30	1 <sup>1</sup> / <sub>2</sub> -1 <sup>1</sup> / <sub>4</sub>	13-36	6 <sup>1</sup> / <sub>4</sub>	2,84
25	18 <sup>1</sup> / <sub>2</sub>	470	20 <sup>1</sup> / <sub>16</sub>	510	3 <sup>1</sup> / <sub>8</sub>	80	1 <sup>7</sup> / <sub>32</sub>	30	1 <sup>1</sup> / <sub>2</sub> -1 <sup>1</sup> / <sub>4</sub>	13-36	6 <sup>3</sup> / <sub>4</sub>	3,06
26	18 <sup>3</sup> / <sub>8</sub>	473	20 <sup>3</sup> / <sub>16</sub>	522	3 <sup>3</sup> / <sub>4</sub>	95	1 <sup>3</sup> / <sub>8</sub>	35	3 <sup>1</sup> / <sub>4</sub> -1 <sup>13</sup> / <sub>16</sub>	19-46	11 <sup>7</sup> / <sub>8</sub>	5,39
27	24 <sup>3</sup> / <sub>8</sub>	625	26 <sup>3</sup> / <sub>16</sub>	675	3 <sup>3</sup> / <sub>4</sub>	95	1 <sup>3</sup> / <sub>8</sub>	35	3 <sup>1</sup> / <sub>4</sub> -1 <sup>13</sup> / <sub>16</sub>	19-46	12	5,4
28	36 <sup>3</sup> / <sub>16</sub>	935	39 <sup>3</sup> / <sub>16</sub>	995	4 <sup>7</sup> / <sub>8</sub>	124	1 <sup>1</sup> / <sub>2</sub>	38	1 <sup>1</sup> / <sub>16</sub> -2 <sup>3</sup> / <sub>8</sub>	27-60	18	8,17



# Ratchet Clutches

## 70/700 SERIES

### 70 Series Clutches Rugged and reliable for heavy duty applications

Lowell ratchet clutches are designed from standard bodies, gears, pawls, and springs (see charts). Forces are applied in an optimum manner between the solid steel gear and hefty pawl so that loads are in compression rather than in shear. Gears are a low carbon steel. Rugged tooth design has large contact area with pawl.

- Mounting holes provided in body
- Keyways are per ANSI/ASME B17.1
- Lubrication is recommended after every 1200 hours of operation
- Specials may be ordered with size, shape, and tooth arrangements of your choice
- Free running neutral available on request
- Durable, cast iron construction
- Custom models available
- 100% made in USA



70 Series Clutches



700 Series Clutches

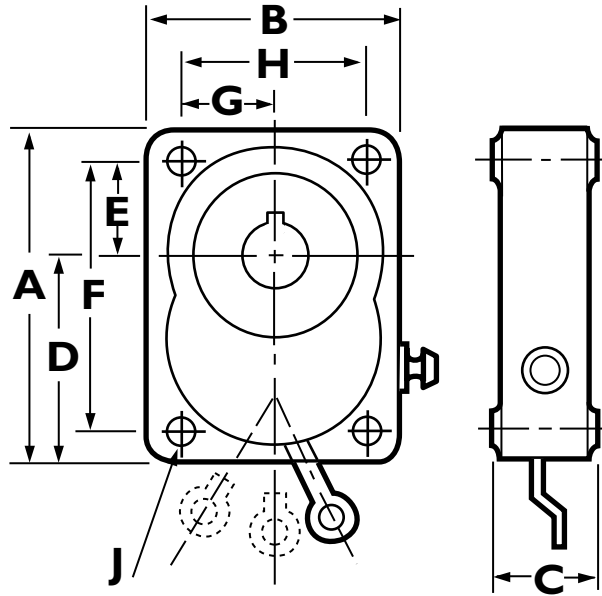


### 700 Series Clutches Low cost and weight with high performance

- Fingertip control of a range of motion: one-way left, one-way right, freewheeling, and fully locked
- Control lever can be connected to hydraulic, pneumatic, or electric actuators for remote shifting
- Simple design ensures durability and reduces purchase and operating costs
- High drive torque to weight ratio
- Maximum driving efficiency
- Minimal overrunning torque
- Versatile mounting options
- Standard gear openings available in hex, square, and bore and keyway (per ANSI/ASME B17.1)
- Can be used singly or in combination
- Open sided for easy, minimal maintenance
- Alignment is not critical
- Custom models available
- 100% made in USA

# 70/700 SERIES

70 Series Clutches



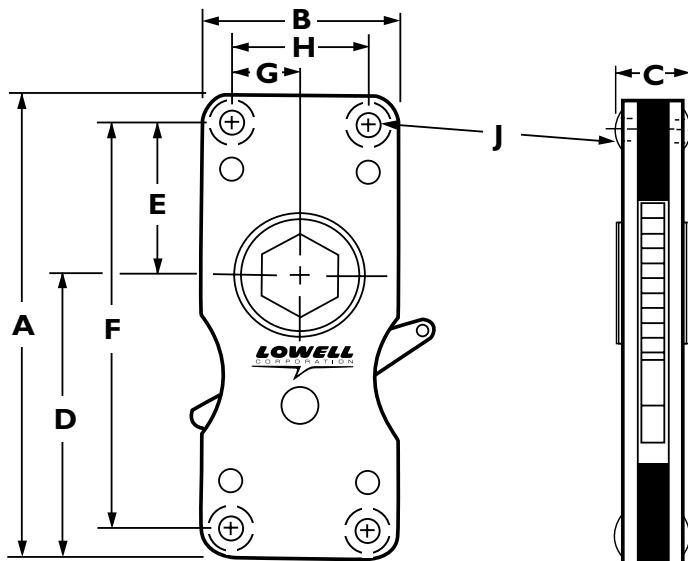
## 70 Series Ratchet Clutches

MODEL	A		B		C		D		E		F		G		H		J		Gear Openings		Max Torque			Overrun Gear		
	IN	MM	IN	MM	IN	MM	IN	MM	IN	MM	IN	MM	IN	MM	IN	MM	IN	MM	MM	LB	KG	lb-ft	NM	Speed	Teeth	
71	2 <sup>7</sup> / <sub>8</sub>	73	2 <sup>3</sup> / <sub>8</sub>	60	1 <sup>5</sup> / <sub>16</sub>	24	1 <sup>3</sup> / <sub>4</sub>	44	1 <sup>3</sup> / <sub>16</sub>	20	2 <sup>1</sup> / <sub>4</sub>	58	7 <sup>7</sup> / <sub>8</sub>	22	1 <sup>3</sup> / <sub>4</sub>	44	1 <sup>7</sup> / <sub>64</sub>	6	3 <sup>3</sup> / <sub>8</sub> -3 <sup>1</sup> / <sub>4</sub>	10-19	1 <sup>1</sup> / <sub>2</sub>	0,68	200	272	250	16
72	3 <sup>1</sup> / <sub>4</sub>	82	2 <sup>7</sup> / <sub>8</sub>	74	1 <sup>3</sup> / <sub>16</sub>	30	1 <sup>7</sup> / <sub>8</sub>	48	1 <sup>1</sup> / <sub>16</sub>	26	2 <sup>5</sup> / <sub>8</sub>	66	1 <sup>1</sup> / <sub>8</sub>	28	2 <sup>1</sup> / <sub>4</sub>	58	1 <sup>7</sup> / <sub>64</sub>	6	1 <sup>1</sup> / <sub>2</sub> -1	13-25	2 <sup>1</sup> / <sub>4</sub>	1,02	300	406	100	16
73	4	102	3 <sup>1</sup> / <sub>8</sub>	80	1 <sup>3</sup> / <sub>16</sub>	34	2 <sup>7</sup> / <sub>16</sub>	62	1 <sup>3</sup> / <sub>16</sub>	30	3 <sup>1</sup> / <sub>4</sub>	82	1 <sup>13</sup> / <sub>16</sub>	30	2 <sup>1</sup> / <sub>8</sub>	60	2 <sup>1</sup> / <sub>64</sub>	8	1 <sup>1</sup> / <sub>2</sub> -1 <sup>1</sup> / <sub>4</sub>	13-36	3 <sup>1</sup> / <sub>2</sub>	1,59	500	678	100	20
74	5 <sup>1</sup> / <sub>8</sub>	130	3 <sup>7</sup> / <sub>8</sub>	98	1 <sup>7</sup> / <sub>16</sub>	36	3 <sup>1</sup> / <sub>8</sub>	80	1 <sup>1</sup> / <sub>2</sub>	38	4 <sup>1</sup> / <sub>8</sub>	105	1 <sup>7</sup> / <sub>16</sub>	36	2 <sup>7</sup> / <sub>8</sub>	74	2 <sup>5</sup> / <sub>64</sub>	10	3 <sup>3</sup> / <sub>4</sub> -1 <sup>13</sup> / <sub>16</sub>	19-46	6 <sup>1</sup> / <sub>4</sub>	2,84	800	1085	75	20
75	6 <sup>1</sup> / <sub>2</sub>	165	5	128	1 <sup>9</sup> / <sub>16</sub>	40	4	102	1 <sup>7</sup> / <sub>8</sub>	48	5 <sup>1</sup> / <sub>4</sub>	134	1 <sup>7</sup> / <sub>8</sub>	48	3 <sup>3</sup> / <sub>4</sub>	95	1 <sup>7</sup> / <sub>32</sub>	14	1 <sup>1</sup> / <sub>16</sub> -2 <sup>3</sup> / <sub>8</sub>	27-60	11	5,0	1500	2034	60	24
76	8 <sup>3</sup> / <sub>8</sub>	213	6 <sup>1</sup> / <sub>4</sub>	159	1 <sup>7</sup> / <sub>16</sub>	37	5 <sup>1</sup> / <sub>4</sub>	133	2 <sup>1</sup> / <sub>2</sub>	64	7 <sup>1</sup> / <sub>8</sub>	181	2 <sup>1</sup> / <sub>2</sub>	64	5	127	1 <sup>7</sup> / <sub>32</sub>	14	1 <sup>11</sup> / <sub>16</sub> -3 <sup>1</sup> / <sub>4</sub>	42-80	15	6,8	2500	3390	50	24
77	9 <sup>3</sup> / <sub>4</sub>	248	7 <sup>1</sup> / <sub>2</sub>	191	1 <sup>1</sup> / <sub>2</sub>	38	6	152	3 <sup>1</sup> / <sub>8</sub>	79	8 <sup>7</sup> / <sub>16</sub>	214	3 <sup>1</sup> / <sub>8</sub>	79	6 <sup>1</sup> / <sub>4</sub>	159	1 <sup>7</sup> / <sub>32</sub>	14	2 <sup>1</sup> / <sub>8</sub> -3 <sup>3</sup> / <sub>8</sub>	70-95	24	10,89	4100	5560	50	24
78	10 <sup>7</sup> / <sub>8</sub>	276	8 <sup>3</sup> / <sub>8</sub>	213	1 <sup>13</sup> / <sub>16</sub>	49	6 <sup>1</sup> / <sub>2</sub>	165	3 <sup>3</sup> / <sub>8</sub>	92	9 <sup>3</sup> / <sub>8</sub>	238	3 <sup>7</sup> / <sub>16</sub>	87	6 <sup>1</sup> / <sub>8</sub>	175	1 <sup>7</sup> / <sub>32</sub>	14	2 3 <sup>3</sup> / <sub>4</sub> -4 <sup>3</sup> / <sub>8</sub>	70-120	29	13,15	6260	8490	30	24

## 700 Series Ratchet Clutches

701	4	102	1 <sup>3</sup> / <sub>8</sub>	41	2 <sup>1</sup> / <sub>32</sub>	17	2 <sup>7</sup> / <sub>16</sub>	62	1 <sup>21</sup> / <sub>64</sub>	34	3 <sup>1</sup> / <sub>2</sub>	89	9 <sup>1</sup> / <sub>16</sub>	14	1 <sup>1</sup> / <sub>8</sub>	29	3 <sup>1</sup> / <sub>16</sub>	5	3 <sup>3</sup> / <sub>8</sub> -3 <sup>1</sup> / <sub>4</sub>	10-19	3 <sup>3</sup> / <sub>4</sub>	0,34	85	115	250	16
702	5 <sup>1</sup> / <sub>4</sub>	133	2 <sup>3</sup> / <sub>8</sub>	60	6 <sup>1</sup> / <sub>64</sub>	24	3 <sup>7</sup> / <sub>8</sub>	92	1 <sup>1</sup> / <sub>4</sub>	32	4 <sup>1</sup> / <sub>2</sub>	114	1 <sup>13</sup> / <sub>16</sub>	21	1 <sup>3</sup> / <sub>8</sub>	41	1 <sup>7</sup> / <sub>64</sub>	7	1 <sup>1</sup> / <sub>2</sub> -1	13-25	1 <sup>1</sup> / <sub>2</sub>	0,68	175	237	100	20

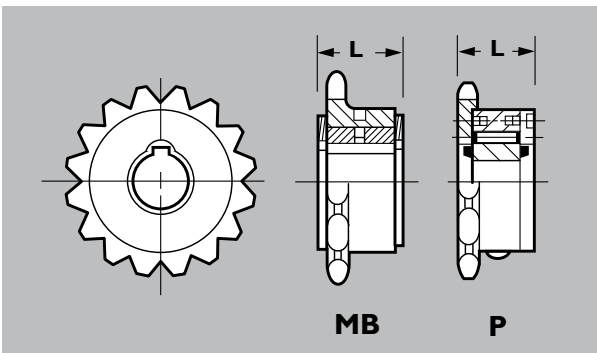
700 Series Clutches



# Roller Clutches

## For applications demanding high precision motion control

The simple construction of the Roller Clutch results in an easy-to-produce one-way clutch device that saves money for the user or OEM. Overrunning clutches are also known as free-wheeling or one-way clutches. In these roller-ramp clutches, engagement occurs with a wedging of the rollers between the inner cam and the outer housing. Torque capacity is normally limited only by the contact stresses between the parts. Standard keyways are per ANSI/ASME B17.1. Available accessories include ring covers, seal adders, drilled and tapped cams. Call factory for assistance.



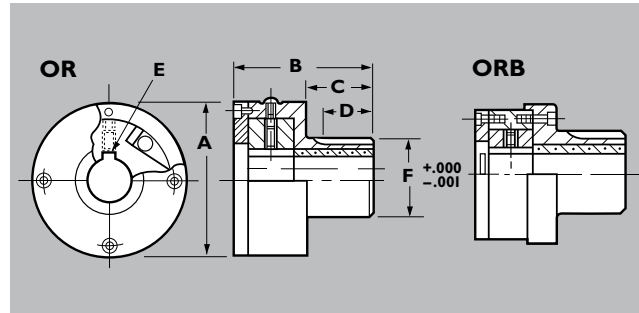
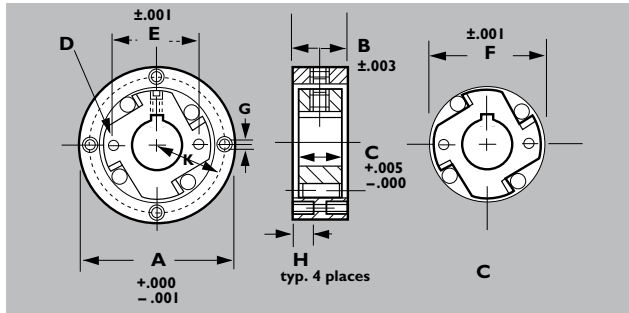
### One Way Sprocket

Max. Bore		Cam Size	Pitch	Number of Teeth		MB		L P	
in	mm	in	in	mb	p	in	mm	in	mm
$\frac{9}{16}$	14,3	5	35	15;16 +	17 +	$\frac{13}{16}$	20,6	61/64	24,2
$\frac{5}{8}$	16	14	35	20 +	21 +	$\frac{13}{16}$	20,6	1 11/32	34,1
$\frac{7}{8}$	22,2	28	35	25 +	26 +	$1\frac{1}{16}$	27	1 5/32	29,4
$\frac{9}{16}$	14,3	5	40	12 +	13 +	$\frac{13}{16}$	20,6	1 1/16	27
$\frac{5}{8}$	16	14	40	15 +	16 +	$\frac{13}{16}$	20,6	1 5/32	29,4
$\frac{7}{8}$	22,2	28	40	20 +	21 +	$1\frac{1}{16}$	27	1 9/32	32,6
$\frac{5}{8}$	16	14	50	12 +	13 +	$\frac{13}{16}$	20,6	1 13/64	30,6
$\frac{7}{8}$	22,2	28	50	15;16 +	17 +	$1\frac{1}{8}$	27	1 11/32	34,1
$1\frac{1}{4}$	32	100	50	20;21 +	22 +	$1\frac{3}{8}$	35	1 9/16	39,7
$\frac{5}{8}$	16	14	60	12 +	13 +	$\frac{13}{16}$	20,6	1 21/64	33,7
$\frac{7}{8}$	22,2	28	60	14 +	15 +	$1\frac{1}{8}$	27	1 29/64	37
$1\frac{1}{4}$	32	100	60	18 +	19 +	$1\frac{3}{8}$	35	1 11/16	42,9

\* Please call 800-456-9355 for complete ordering information

**Type MB:** Stocked in smallest sprocket listed. See Cam & Ring Assemblies for bore size availability. **Type P:** Made to order. Seals optional.

\* Please see Design Guide for complete ordering information.

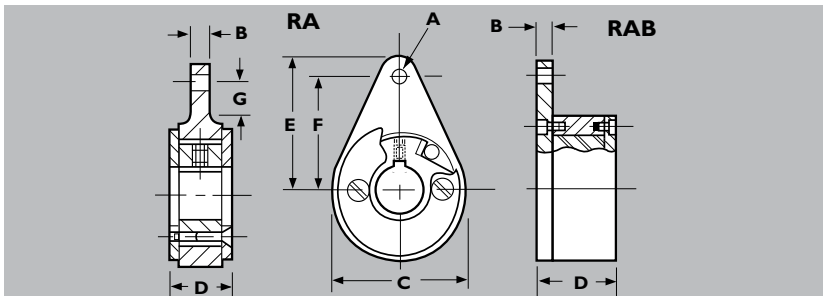


### Cam and Ring Assembly

Cam only Model	Complete Model	A	B	C	D	E	F	G	H	K	Bore Openings	Torque	Overrun Speed
		in mm	in mm	in mm	in mm	in mm	in mm	in mm	in mm	in mm	in mm	lb-ft nm	rpm
C5	CR5	1/2 38,1	21/32 16,7	41/64 16,3	9/64 3,6	53/64 21	1 1/64 25,8	6-32	7/32 5,6	1 9/32 32,5	1/4-1/2 6,4-12,7	5 6,77	1800
C14	CR14	1 7/8 47,6	21/32 16,7	41/64 16,3	9/64 3,6	1 1/6 28,6	1 3/64 34,9	6-32	9/32 7,1	1 11/16 42,9	3/8-5/8 9,5-17,1	14 18,96	1800
C28	CR28	2 5/8 66,7	25/32 19,8	49/64 19,4	13/64 5,2	1 27/64 36,1	1 29/64 48,4	8-32	3/8 9,5	2 7/32 58	5/8-7/8 17,1-22,2	28 37,92	1500
C100	CR100	3 1/2 88,9	11/32 26,2	1 1/64 25,8	17/64 6,7	1 7/8 47,6	2 41/64 67,1	10-32	3/8 9,5	3 76,2	3/4-1 1/4 19-31,8	100 135,43	1000
C200	CR200	4 3/2 111,1	1 3/8 41,3	1 39/64 40,9	17/64 6,7	2 21/32 67,5	3 3/32 83,3	1/4-20	7/16 11,1	3 13/16 96,8	1 1/2-2 38,1-50,8	200 270,86	800
C500	CR500	5 7/8 149,2	1 5/64 45,6	1 25/32 45,2			4 7/16 115,9	5/16-18	1/2 12,7	5 1/4 133,4	2 1/4-2 3/4 57,2-69,9	500 677,14	600

### Overrunning Clutch

Model	A	B	C	D	E	F	G	H	Bore Openings	Torque	Overrun Speed
	in mm	in mm	in mm	in mm	in mm	in mm	in mm	in mm	in mm	lb-ft nm	rpm
OR5	1 5/8 41,3	1 15/16 49,2	1 13/16 20,6	7/16 11,1	3/16 x 3/32 4,8 x 2,4	7/8 11,1	41/64 16,3	1 1/16 27	1/4-1/2 6,4-12,7	5 6,77	1800
OR14	2 50,8	2 1/8 54	1 25,4	9/16 14,3	3/16 x 3/32 4,8 x 2,4	1 1/4 31,8	41/64 16,3	1 3/16 30,2	3/8-5/8 9,5-17,1	14 18,96	1800
OR28	2 5/8 66,7	2 23/32 69,1	1 15/16 23,81	5/16 33,3	3/16 x 3/32 4,8 x 2,4	1 3/8 34,9	49/64 19,4	1 3/4 44,4	3/8-7/8 17,1-22,2	28 37,92	1500
OR100	3 3/8 85,7	3 1/16 77,8	1 17/16 36,5	1 25,4	1/4 x 1/8 6,4 x 3,2	1 3/4 44,5	1 1/64 25,8	1 3/4 44,4	3/4-1 19-25,4	100 135,43	1000
ORB100	3 5/8 92	3 11/32 84,9	1 1/2 38,1	1 13/16 20,6	3/8 x 3/16 9,5 x 4,8	2 1/4 57,2	1 1/64 25,8	2 50,8	3/4-1 1/4 19-31,8	100 135,43	1000
ORB200	4 1/2 114,3	4 1/2 114,3	2 1/16 52,4	1 5/16 33,3	3/8 x 3/16 9,5 x 4,8	3 76,2	1 39/64 40,9	2 1/2 63,5	1 1/2-2 38,1-50,8	200 270,86	800
ORB500	6 152,4	5 7/8 131	2 1/2 63,5	2 50,8	1/2 x 1/4 12,7 x 6,4	4 1/2 114,3	1 25/32 45,2	3 76,2	2 1/4-2 3/4 57,2-69,9	500 677,14	600



### Roller Arm Assembly

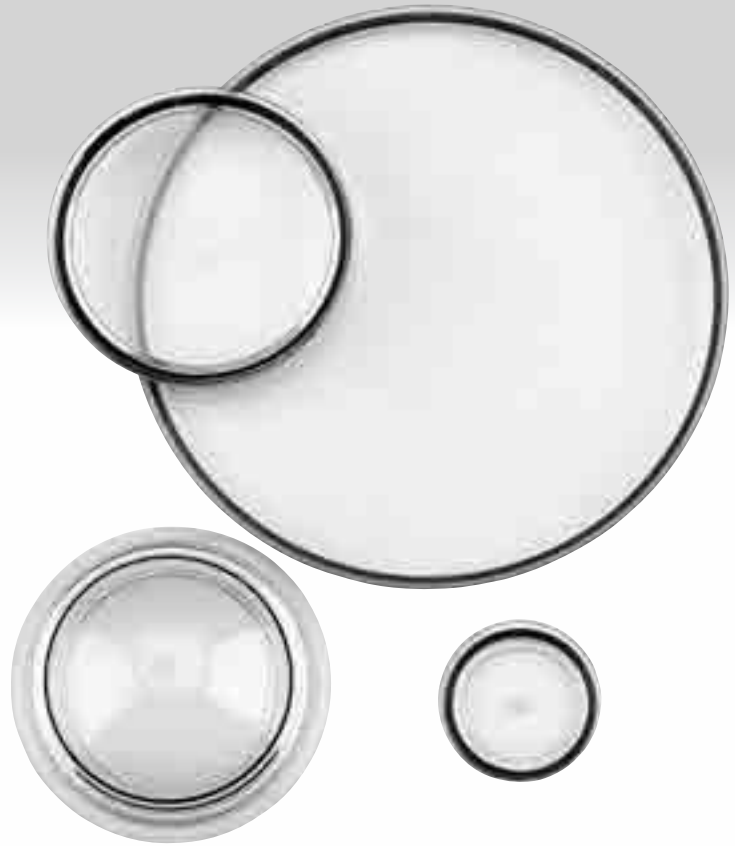
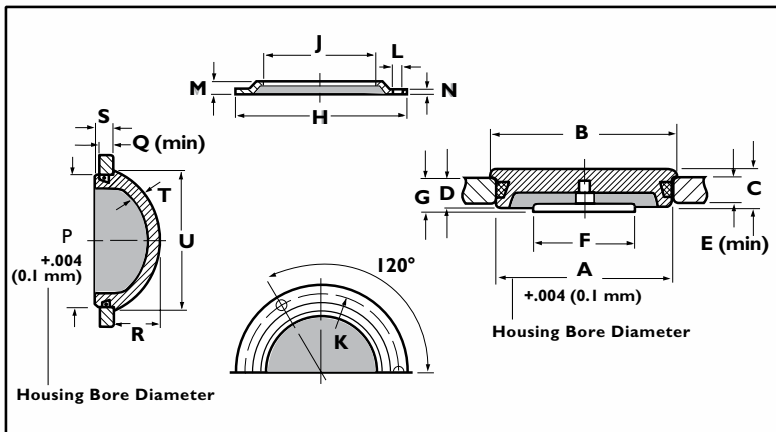
Model	A	B	C	D	E	F	G	Bore Openings	Torque	Overrun Speed
	in mm	in mm	in mm	in mm	in mm	in mm	in mm	in mm	lb-ft nm	rpm
RA14	1/4 6,4	1/4 6,4	1 7/8 47,6	1 13/16 20,6	1 3/4 44,5	1 1/2 38,1	7/16 11,1	3/8 - 5/8 9,5 - 17,1	14 18,96	1800
RA100	5/16 7,9	5/16 7,9	3 3/4 95,3	1 3/8 34,9	3 7/16 87,3	3 76,2	1 25,4	3/4 - 1 1/4 19 - 31,8	100 135,43	1000
RAB200	1 13/32 10,3	3/8 9,5	4 1/2 114,3	2 1/4 60,3	4 1/4 108	3 3/8 92,1		1 1/2 - 2 38,1 - 50,8	200 270,86	800
RAB500	1 17/32 13,5	3/8 9,5	6 152,4	2 17/32 64,3	5 1/2 139,7	4 1/4 120,7		2 1/4 - 2 3/4 57,2 - 69,9	500 677,14	600

\* Please call 800-456-9355 for complete ordering information

# Observation Windows

## For trouble-free visual inspection

- Solid, shock-resistant transparent acrylic
- Withstands temperatures up to 158°F (70°C) and internal pressures up to 8.8 psi (.61 Bar) or higher with optional guard ring
- Removable film protects polished face from damage during delivery and assembly
- White reflectors are furnished with all windows up to 8-inch diameter (removable if not desired)



## Oil Window

Model	ØA		ØB		C		D		E(min)		ØF		Reflector G	
	in	mm	in	mm	in	mm	in	mm	in	mm	in	mm	in	mm
14200	7/8	22,2	1	25	11/32	8,5	9/32	7	7/32	5	3/4	13/32	10	
20200	1 1/4		1 3/8		11/32		9/32		7/32		1 1/8	13/32		
21200		32		35		8,5		7		5	28		10	
24200	1 1/2	38,1	1 5/8	41	11/32	8,5	9/32	7	7/32	5	1 1/8	28	13/32	10
32200	1 3/4	50	2 1/8	53	13/32	10	11/32	8,5	1/4	6	1 1/8	28	13/32	10
48200	2 5/16	75	3 1/16	76	13/32	10	11/32	8,5	1/4	6	1 1/8	28	13/32	10
64200	3 15/16	100	4 1/16	103	13/32	10	11/32	8,5	1/4	6	1 1/8	28	13/32	10
95200	5 29/32	150	6	153	13/32	10	11/32	8,5	1/4	6	1 1/8	28	13/32	10
96100	7 7/8	200	7 63/64	203	13/32	10	11/32	8,5	1/4	6	-	-	-	-
97100	9 27/32	250	9 61/64	253	1/2	12	13/32	10	10/32	8	-	-	-	-
98100	11 37/64	300	11 59/64	303	20/32	15	1/2	12	13/32	10	-	-	-	-

## Guard Ring for Push-Fit Oil Windows

Model	Ø H		Ø J		Ø K		Ø L		M		N		Use with
	in	mm	in	mm	in	mm	in	mm	in	mm	in	mm	
44600	2 3/4	69	1 13/16	46	2 31/64	63	9/64	3,6	1/8	3,2	1/32	0,8	32200
62600	3 7/8	98	2 3/4	70	3 35/64	90	3/16	4,8	1/8	3,2	3/64	1	48200
78600	4 7/8	123	3 3/4	95	4 17/32	115	3/16	4,8	1/8	3,2	3/64	1	64200

## Oil Circulation Indicator

Model	Ø P		Q (min)		R		S		T		Ø U	
	in	mm	in	mm	in	mm	in	mm	in	mm	in	mm
24700	1 1/2	38,1	7/32	5	2 7/32	21	9/32	7	7/32	5	1 5/8	41
47700		75		6		30		8.5		5		80
48700	3		1/4		1 3/16		11/32		7/32		3 3/16	



# Specials



## How may we help you?

Frequently, application or design engineers require a non-standard motion control device. Sometimes we can meet this need by modifying an existing product. For example, we can alter the shape or size of the drive, change the number of teeth on a gear, add a free-running neutral, shorten, lengthen, bend, off-set or hinge the handle and reposition mounting configurations.

Other applications may require a completely new design. Starting with a sketch or detailed drawing of the application, samples are fabricated in some cases and then the product is manufactured.

To discuss your application, call your local Lowell distributor or factory representative.

# Repair Parts

## Complete Kits

Complete repair kits are available for many of our ratchet arms, clutches, and socket wrenches.

**10 and 40 Series Ratchet Arms**  
**70 Series Ratchet Clutches**  
**50 Series Socket Wrenches**  
**Quick Release Series Socket Wrenches**

**Contents:**  
 2 pawls, 2 pawl springs, 1 shifter



**20 Series Ratchet Arms**

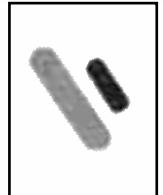
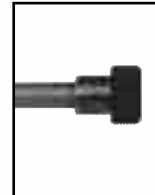
**Contents:**  
 2 pawls, 2 pawl springs, 1 shifter screw,  
 1 rod spring



## Rod and Knurl Kits

**20 Series Ratchet Arms**

**Contents:**  
 1 rod and knurl assembly, 1 shifter screw,  
 1 rod spring



## Cover Plate Kits

**10 Series Ratchet Arms**  
**20 Series Ratchet Arms**  
**40 Series Ratchet Arms**  
**70 Series Ratchet Clutches**

**Contents:**  
 1 cover plate, 1 or more cover screws



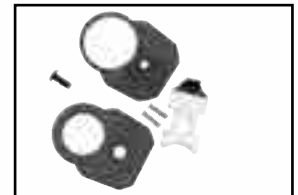
**50 Series Socket Wrenches**

**Contents:**  
 1 cover plate, 1 cover spacer,  
 1 snap ring, 1 or more cover screws



**50 Series Socket Wrenches**  
**Quick Release Series Socket Wrenches**

**Contents:**  
 1 cover plate, 1 cover spacer,  
 1 cover screw, 1 latch, 2 latch springs



# New Products



MODEL 516X



MODEL 516



## SureTork® Torque Wrench for pipeline work

The SureTork Torque Wrench can greatly facilitate proper clamp installation by ensuring that nuts are always properly torqued. Unlike other torque wrenches its bolt-thru feature permits easy access to nuts on any threaded length.

- Torque setting is field adjustable from 30 to 150 lb-ft in one lb-ft increments
- Unique bolt-thru head allows use on any length bolt or all-thread rod
- Helps meet manufacturers installation and warranty requirements
- Also available in sets with standard or extended reach sockets
- Standard hex and square sockets from 5/8 inch to 1-1/4 inch
- Extended reach hex sockets from 7/8 inch to 1-1/4 inch
- Torque handle clicks when set torque is reached
- Quick Release socket for fast socket changes
- Heavy duty reversible ratchet head

### Available Socket Sizes:

#### Standard Hex

Inch - 5/8, 3/4, 7/8, 15/16, 1, 1-1/16, 1-1/8, 1-1/4  
MM - 16, 17, 19, 22, 24, 25, 27, 28, 30, 32

#### Extended Reach Hex

Inch - 3/4, 7/8, 15/16, 1-1/16, 1-1/8, 1-1/4

#### Standard Square

Inch - 5/8, 11/16, 3/4, 1, 1-1/16, 1-1/8, 1-1/4  
MM - 16, 17, 19, 22, 24, 25, 27, 2

### SureTork Set 516

Includes one SureTork wrench and six standard bolt-thru sockets

### SureTork Set 516X

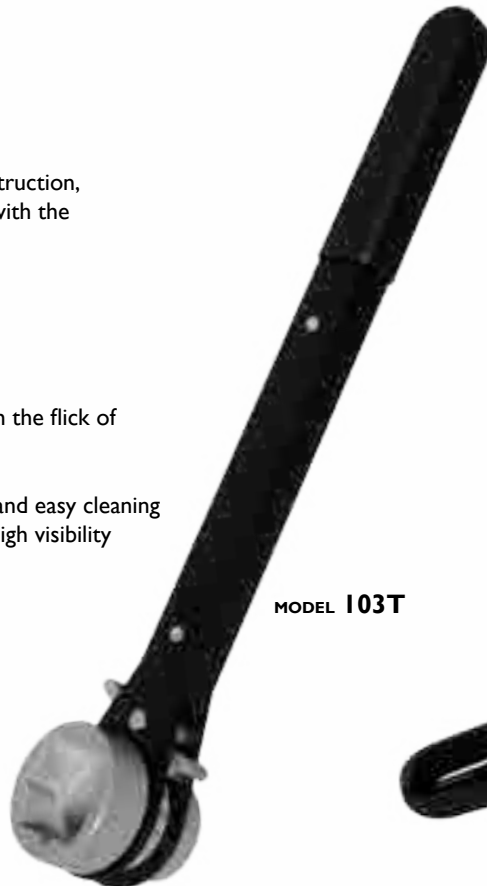
Includes one SureTork wrench and five extended reach bolt-thru sockets

## Triple Square Tower Wrench

Provides greater flexibility for utility, construction, and maintenance workers when dealing with the most common tower fastener nut sizes .

- Three models:
  - I03T, stamped handle, 12" long
  - I04T, stamped handle, 15" long
  - I05T, stamped handle, 18" long
- Three square sizes: 1 1/8", 1 1/4", 1 1/2"
- Sturdy ratchet mechanism reverses with the flick of a lever
- Bolt-thru design
- Coated with epoxy paint for durability and easy cleaning
- Socket painted fluorescent orange for high visibility
- Vinyl grip for comfort
- Up to 300 lb-ft torque

Part Number	Description
21-103LI-0000	Handle I03T (12 inch)
21-104LI-0000	Handle I04T (15 inch)
21-105LI-0000	Handle I05T (18 inch)
22-L3824-5903	Transmission Socket



MODEL I03T

## 101 XRS Pad Mount Transformer Wrench

Designed for the 5-point (security pentagon) and 3/4" security hardware used in pad mount transformers.

- Rugged one-piece design incorporates gear, shaft, and sockets
- Sturdy ratchet mechanism reverses with the flick of a lever
- 32 teeth reduce throw angle for work in tight spots
- Socket openings are 3/4" hex and 7/8" pentagon
- Wrench head pinned to reduce wobbling for better torque and less wear
- Torque tested to 90 lb-ft
- Vinyl grip for comfort
- Length 7 inches
- Weight 1.5 lbs.



MODEL I01XRS

## Model 101SS Ratchet Arm




Perfect for harsh working conditions, exposure to the elements, wash-down environments, areas with caustic chemicals.

- All non-corrosive components.
- Stainless steel side plates
- Stainless gear
- Stainless ratcheting components
- Plastic spacer
- Sturdy ratchet mechanism reverses with the flick of a lever
- Bolt-thru design
- Length 7" (180mm), weight 3/4 lb.
- Torque limit 80 lb-ft (1080Nm)
- 16 gear teeth yield 22.5° rotation between clicks



MODEL 101SS

## Model 101SS Ratchet Arm

Model	A		B		C		D		Gear Openings	lb kg	
	in	mm	in	mm	in	mm	in	mm			
101SS	7	180	7 <sup>3</sup> / <sub>8</sub>	190	1 <sup>3</sup> / <sub>16</sub>	40	<sup>9</sup> / <sub>32</sub>	15	 3 <sup>1</sup> / <sub>8</sub> , 1 <sup>1</sup> / <sub>2</sub> , 5 <sup>1</sup> / <sub>8</sub>  7 <sup>1</sup> / <sub>16</sub> , 1 <sup>1</sup> / <sub>2</sub> , 9 <sup>1</sup> / <sub>16</sub> , 5 <sup>1</sup> / <sub>8</sub> , 3 <sup>1</sup> / <sub>4</sub>  1 <sup>1</sup> / <sub>2</sub> , 5 <sup>1</sup> / <sub>8</sub> , 3 <sup>1</sup> / <sub>4</sub>	3 <sup>3</sup> / <sub>4</sub>	0,34

## Model 104 & 105 Ratchet Arms

Provides greater leverage for utility, construction, and maintenance workers.

- Model 104 has 16" handle
- Model 105 has 19" handle
- Riveted stampings
- Sturdy ratchet mechanism reverses with the flick of a lever
- Bolt-thru design
- Factory pre-assembled, gears not replaceable
- Model 104 has vinyl grip for comfort



MODEL 104

MODEL 105

## Ratchet Arms

Model	A		B		C		D		Gear Openings		lb kg	
	in	mm	in	mm	in	mm	in	mm	in	mm		
104	15 <sup>3</sup> / <sub>4</sub>	400	17	432	2 <sup>1</sup> / <sub>2</sub>	64	<sup>7</sup> / <sub>8</sub>	22	1 <sup>1</sup> / <sub>2</sub> -1 <sup>1</sup> / <sub>4</sub>	12-32	2 <sup>3</sup> / <sub>4</sub>	1,25
105	18 <sup>3</sup> / <sub>4</sub>	476	20	508	2 <sup>1</sup> / <sub>2</sub>	64	<sup>7</sup> / <sub>8</sub>	22	1 <sup>1</sup> / <sub>2</sub> -1 <sup>1</sup> / <sub>4</sub>	12-32	3	1,36

\* Please see Design Guide for complete ordering information.

**This catalog supersedes all previously published literature. Products not shown herein have been discontinued. Contact factory for possible availability of any product not shown.**

**All details of manufacture are given without obligation. Tolerances are in accordance with ANSI/ASME.**

**We reserve the right to amend or approve the products for technical reasons.**

**Weights given are average, and we are not bound by the weights quoted.**

Distributed by:



## Warranty

Lowell's products are guaranteed against defects in material and workmanship for a period of one year after installation so long as date of installation is less than 24 months after date of manufacture. The Lowell Corporation certifies that Lowell T-Torkers have been calibrated to an accuracy of plus or minus ten percent of the torque value stamped on the tool. These are delicate instruments. Do not use them as hammers. This Warranty will be void if there is any evidence of using these tools as a hammer. These tools are guaranteed to be free from defects in material and workmanship for a period of one year from the date of sale, provided they are used as torque instruments.

**THERE ARE NO OTHER WARRANTIES, EXPRESS OR IMPLIED, WHETHER OF MERCHANTABILITY, FITNESS FOR USE, OR OTHERWISE.**

Lowell shall have no liability for defects until the goods are returned to it with its permission. Buyer's exclusive remedy shall be the replacement, correction or refund of the purchase price of the defective part, at Lowell's option. In no event shall Lowell be liable for incidental or consequential damages for any cause whatsoever, whether breach or warranty or otherwise.



Lowell Corporation  
65 Hartwell Street  
West Boylston, MA 01583 USA  
508/835-2900 800/456-9355  
fax 508/835-2944  
www.lowellcorp.com  
customerservice@lowellcorp.com

