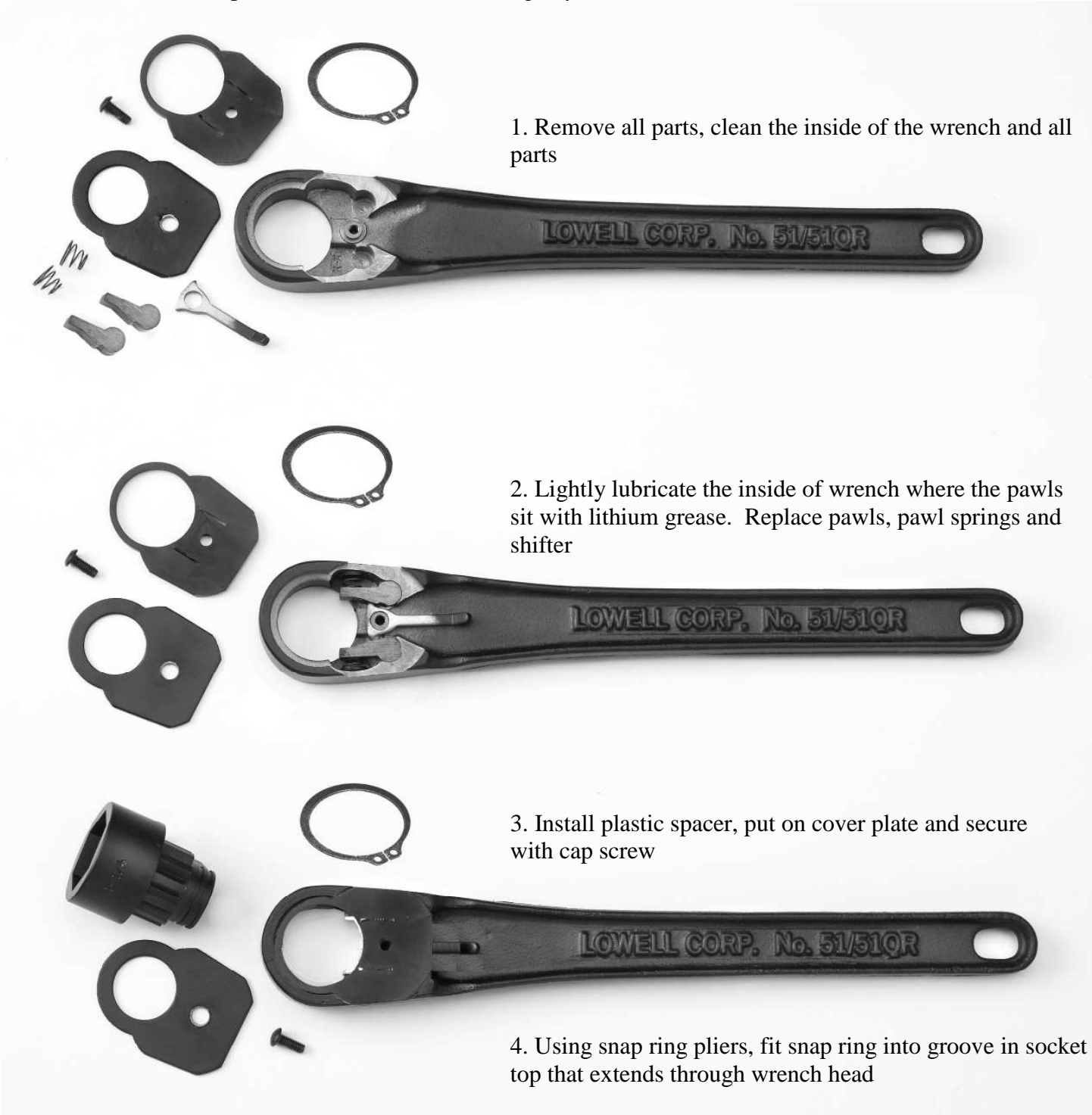


50 SERIES SOCKET WRENCH REPAIR

Simple instructions for maintaining any Lowell 50 Series Socket Wrench



1. Remove all parts, clean the inside of the wrench and all parts

2. Lightly lubricate the inside of wrench where the pawls sit with lithium grease. Replace pawls, pawl springs and shifter

3. Install plastic spacer, put on cover plate and secure with cap screw

4. Using snap ring pliers, fit snap ring into groove in socket top that extends through wrench head

Model	Repair Kit*	Cover Plate Kit**
50 & 51	51902	51903
52 & 53	53902	53903
54 & 55	55902	55903
56	56902	56903
58	59902	59903

*Repair Kits include – pawls (2), pawl springs (2) and shifter (1)

**Cover Plate Kits include – cover plate (1) and cap screw (1 or more)



WWW.LOWELLCORP.COM

65 Hartwell St., West Boylston, MA 01583
 Ph 508-835-2900, Fax 508-835-2944
 Toll free 800-456-9355
 customerservice@lowellcorp.com